



DELIVERING  
UK WIDE  
5 DAYS A  
WEEK

**gmc**  
CORSEHILL



UK SPECIALIST  
IN CLEANING,  
CATERING,  
INDUSTRIAL  
PACKAGING  
SUPPLIES AND  
DISPOSABLES



[GMCCORSEHILL.CO.UK](http://GMCCORSEHILL.CO.UK)

# DELIVERING UK WIDE 5 DAYS A WEEK



# CONTENTS

4-8

BAR SUPPLIES

9-17

CLEANING CHEMICALS

18-25

INDUSTRIAL CLEANING

26-35

CLEANING MATERIALS

36-41

PAPER PRODUCTS

42-45

INDUSTRIAL PACKAGING

46-48

PROTECTIVE WEAR

49-69

CATERING PACKAGING

70-75

BUTCHERS & BAKERS PACKAGING

76-80

RETAIL PACKAGING

81-84

HAND HYGIENE

85-87

DOSING UNITS

88-89

INDEX





STRAWS

ACCESSORIES

# BAR SUPPLIES



COCKTAIL  
NAPKINS

COCKTAIL  
DISC STIRRERS



DISPOSABLE  
GLASSWARE





## Disposable Bar Products



**8" Black Plastic Flexi Straw**

Size: Box 250

Code: FC003



We do a wide selection of  
disposable & reusable glasses -  
phone for more details



**8" Striped Flexi Straw**

Size: Box 250

Code: DS84001



**5" Black Sip Straw**

Size: Box 1000

Code: FC001



**Black Straw with Spoon end**

Size: Box 250

Code: FC064



**20oz Katerglass CE Marked**

Size: Box 500

Code: 17213



**10oz Katerglass CE Marked**

Size: Box 1000

Code: 17205



**8oz Katerglass**

Size: Box 1000

Code: 17204



**100ml Champagne Flute**

Size: Box 100

Code: 10154L



**20oz Pint Flexi Glass CE Marked**

Size: Box 800

Code: 66M84



**10oz Half Pint Flexi Glass CE Marked**

Size: Box 1250

Code: 66M85

## Barware Supplies



All types of bar supplies available to order - phone for more details



Casablanca Glassware - all sizes available to order



Pint & Half Pint Glasses, Conical, Tulip, Hiball, etc CE stamped - all available to order



**Rinse Aid Multi**

Size: 5lt

Code: A032EEV2



**Hi Ball Glasses & Toughened Hiball**

All sizes available to order



Imperial & Saxon Wine Glasses, Lined/  
Unlined, CE Stamped available to order



**Glass Renovator**

Size: 2.5lt

Code: A066AEV



**Beerline Cleaner**

Size: 5lt

Code: A005EEV



**Machine Glasswash**

Size: 5lt

Code: A069EEV

## Crockery - Steelite, Churchill, Artis, Etc



A wide range of creative tableware available - wooden platters, slate mats, cast iron pots, etc



Athena Value Hotelware Crockery for day to day use - phone for more details



Steelite have a stylish and elegant range of crockery - phone for more details



Utopia Tableware both cutting edge designs and hardwearing practical designs available



**25cm 2ply Black Cocktail Napkins**

Size: Case 3000

Code: COCKTAILB



**25cm 2ply White Cocktail Napkins**

Size: Case 3000

Code: COCKTAIL



**White Wax Backed Coasters**

Size: 3000 Case

Code: COASTERL



**Wooden Cocktail Sticks**

Size: Pack 100

Code: COCKTAILS



**12" Wooden Skewers**

Size: Pack 200

Code: GV588



**Quash Lipstick Remover**

Size: Each

Code: QUASH



**5 Brush extended centre glass wash**

Size: Each

Code: GWB



**Cocktail Disc Stirrers**

Size: Boxes 250    Code: 35INB - 7" Black  
35INWH - 6" White



**Black Bar Caddy**

Size: Each

Code: BARC





CATERING  
HYGIENE

BAR & CELLAR  
HYGIENE

# CLEANING CHEMICALS

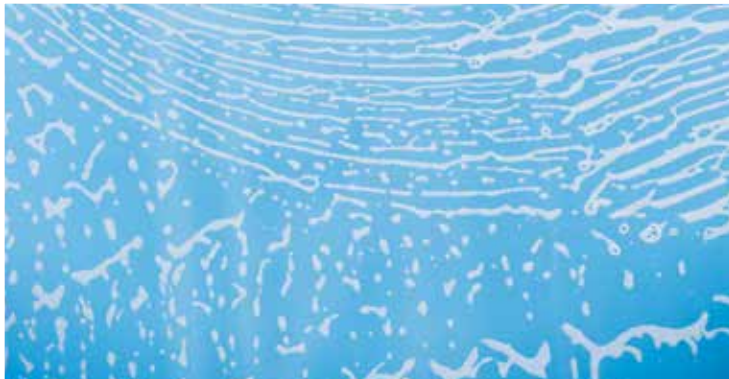


FLOOR AND  
CARPET CARE

LAUNDRY



BLEACH AND  
DISINFECTANTS



## Floor Care Products - Polishes, Sealers & Maintainers



**Enhance Ultra High Solids**

Size: 5lt

Code: A098EEV



**Mexapol High Solids Polish**

Size: 5lt

Code: A074EEV



**Easy Shine Floor Polish Maintainer**

Size: 5lt

Code: A064EEV



**Sealant B Emulsion Floor Primer**

Size: 5lt

Code: A061EEV



**Superseal Polyurethane Floor Seal**

Size: 5lt

Code: A027EEV



**Sealaqua Water Based Floor Sealer**

Size: 5lt

Code: A025EEV2



**Sure Strip Floor Polish Stripper**

Size: 5lt

Code: A047EEV



**Easy Strip Fast Acting Polish Stripper**

Size: 5lt

Code: A141EEV



**High Class Neutral Hard Surface Cleaner**

Size: 5lt

Code: A139EEV



**Lemon Floor Gel**

Size: 5lt

Code: A013EEV



**Pine Floor Gel**

Size: 5lt

Code: A097EEV



**Clean & Shine Perfumed Floor Maintainer**

Size: 5lt

Code: A078EEV

## Hard Surface Cleaners & Washroom Hygiene



**Versatile Hard Surface Cleaner with Floral Perfume**

Size: 5lt Code: A018EEV



**H.S.C Lemon Perfume**

Size: 5lt  
Code: A035EEV



**Multi Mystrol all Purpose Cleaner**

Size: 5lt & 750ml Trigger RTU  
Code: A037EE2/ A037AEV



**Apeel Orange Cleaner**

Size: 5lt & 750ml RTU  
Code: A157EEV5 & A112AEV



**Rubicon Oil & Grease Remover**

Size: 5lt  
Code: A044EEV



**E.M.C Safety Floor Cleaner/Degreaser**

Size: 5lt Code: EMC



**Final Touch Sanitiser EN1276**

Size: 5lt & 750ml Trigger RTU  
Code: A020EEV5lt & A060AEV1



**Cleanfast Washroom Cleaner**

Size: 5lt & 750ml Trigger RTU  
Code: A010EEV & A010AEV



**Everfresh Perfumed Toilet Cleaner**

Size: 5lt & 1lt  
Code: A102EEV5 & A102AEV1



**Protect Disinfectant EN1276**

Size: 5lt & 750ml Trigger RTU  
Code: A125EEV5 & A147AEV



**Ephos Cleaning & Descaling**

Size: 5lt & 1lt RTU  
Code: A088EEV5 & A088AEV1



**Hi-Phos Heavy Duty Descaling**

Size: 5lt & 1lt RTU  
Code: A072EEV5 & A072EEV1

## Dish & Glasswash Products



**Blusyl Washing Up Liquid**

Size: 5lt

Code: A001EEV



**Kind Washing Up Liquid**

Size: 5lt

Code: A180EEV



**QSol Perfumed Washing Up Liquid**

Size: 1lt 5lt & 10lt

Code: A002AEV1, A002EEV5 & A002JEV10



**QBac Bactericidal Washing Up Liquid**

Size: 1lt & 5lt

Code: A164AEV5 & A164EEV25



**Glaze 5 in 1 Dishwash Tablets**

Size: 100 Tablets

Code: C021DEV



**Glaze Glass & Dishwash Powder**

Size: 5kg

Code: C042AEV



**Machine Dishwash**

Size: 5lt & 20lt

Code: A070EEV5 & A070JEV20



**Machine Glasswash**

Size: 5lt

Code: A069EEV



**Glass Renovator**

Size: 2.5lt

Code: A066AEV



**Machine Rinsaid for Glasses**

Size: 5lt & 10lt

Code: A032EEV2 & A031IEV10



**Descalc & Cleaning Machines**

Size: 5lt

Code: A178EEV



**Sanitise Pink Powder with Chlorine**

Size: 5kg

Code: C019AEV

## Kitchen Hygiene Products



**Lift Heavy Duty Cleaner Degreaser**

Size: 5lt & 750ml Trigger RTU

Code: A054EEV5 & A129AEV



**Esteem Sanitiser EN1276**

Size: 5lt & 750ml Trigger RTU

Code: A026EEV5 & A148AEV



**Oven Cleaner Low Odour**

Size: 5lt & 750ml Trigger RTU

Code: A071EEV5 & A071AEV



**Combi Oven Cleaner for Automatic Dosing**

Size: 5lt Code: A022EEV



**Sink & Drain Clear Grease & Fat Emulsifier**

Size: 2.5lt Code: A003AEV



**Traywash Cleans Aluminium Equipment**

Size: 20lt Code: C013KEV



**Stainless Steel Cleaner**

Size: 750ml Trigger RTU

Code: A189AEV



**Chlorine Tablets EN1276**

Size: 200 Tablets

Code: C037AEV



**Flash Spray with Bleach**

Size: 450ml Trgger

Code: MS22620



**Destain Coffee Stain & Tannin Remover**

Size: 5kg Tub Code: C001AEV



**Fairy Professional Washing Up Liquid Anti Bac**

Size: 4lt Code: FAIRY



**Finish Powerball Tablets**

Size: 90 Tablets

Code: FINISH



## Housekeeping & Laundry



**Clear Glass & Mirror Cleaner**

Size: 5lt & 750ml Trigger RTU

Code: A096EEV5 & A096AEV



**Cyclone Thick Bleach**

Size: 5lt & 750ml

Code: A154EEV & A154AEV



**Bleach 5%**

Size: 5lt

Code: A065EEV



**Extract Carpet Shampoo**

Size: 5lt

Code: A014EEV



**Low Foam Light for Floor Machines**

Size: 5lt

Code: A176EEV



**Red Soluble Strip Laundry Bags**

Size: 18 x 28 x30" Case 200

Code: LAUNDRY



**one3five Bio Laundry Powder**

Size: 10kg

Code: C050AEV



**one3five Non Bio Laundry Powder**

Size: 10kg

Code: C049AEV



**Search Fabric Conditioner**

Size: 5lt

Code: A030EEV



**Oxy Powder**

Size: 1kg

Code: C018AEV



**Spotlight Spot & Stain Remover**

Size: 750ml Trigger

Code: A034AEV



**Crusader Oxy Destainer**

Size: 10lt

Code: C011IEV

## Handcare Products & Dispensers



**Luxury White Hand & Body**  
Size: 5ltr, 1ltr, 500ml pump bottle  
Code: A194EEV / A194AEV / A194FEV



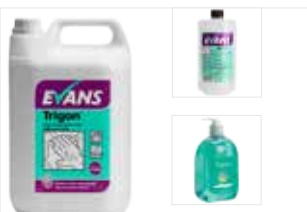
**Pearlescent Hand Hair & Body Wash**  
Size: 5ltr, 1ltr, 500ml pump bottle  
Code: A079EEV2, A079AEV, A079FEV



**Orchard Fresh Hand & Body Wash**  
Size: 5ltr, 500ml pump bottle  
Code: A153EEV / A153FEV



**Citrus Foaming Hand & Body Wash**  
Size: 5ltr  
Code: A181EEV2



**Trigon Unperfumed Hand Soap**  
Size: 5ltr, 1ltr, 500ml pump bottle  
Code: A050EEV, A050AEV, A050FEV



**Ocean Blue Hand Soap**  
Size: 5ltr, 500ml pump bottle  
Code: A153EEV, A153FEV



**Alcohol Hand Rub, Passes EN1276**  
Size: 5ltr, 500ml, 75ml  
Code: A051EEV / A051FEV / A051NEV



**Bulkfill Soap Dispenser**  
Size: Each  
Code: D011AEV



**Evolve Dispenser for Cartridges**  
Size: Each  
Code: D090AEV



**Trigon Foam Hand Soap EN1276**  
Size: 6 x 1Ltr Cartridge  
Code: A063BEV



**Alcohol Hand Rub Passes EN1276**  
Size: 6 x 1Ltr Cartridge  
Code: A051BEV

## Super Concentrate Products



**EC2 Degreaser**

Size: 1lt & 5lt

Code: A107AEV1 & A107EEV5



**EC4 Sanitiser**

Size: 1lt & 5lt

Code: A133AEV1 & A133EEV5



**EC6 All Purpose Surface Cleaner**

Size: 1lt & 5lt

Code: A033AEV1 & A033EEV5



**EC7 Heavy Duty Hard Surface**

Size: 1lt & 5lt

Code: A041AEV & A041EEV



**EC9 Washroom Cleaner & Descaler**

Size: 1lt & 5lt

Code: A057AEV1 & A057EEV5



**E-Dose Wall Shelf**

Size: Each

Code: D032AEV

## Air Fresheners, Deodourisers & Polish



**Odour Neutraliser EN1276**

Size: 5lt & 750ml Trigger RTU

Code: A196EEV5 & A196AEVT



**Fresh Air Freshener**

Size: 5lt & 750ml Trigger RTU

Code: A075EEV5 & A075AEVT



**Florazol Concentrated Deodouriser,  
Freesia, Sandalwood, Floral**

Size: 1lt Code: A113GEV



**Air Freshener Automated  
Dispensers**

Size: Each Code: PL0001



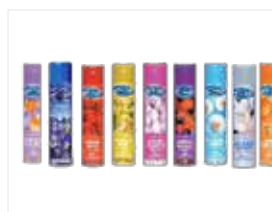
**Air Freshener Starter Kit, Dispenser  
& 4 Air Fresheners**

Size: Each Code: AFSP



**Dispenser Air Fresheners - Various  
Scents**

Size: 270ml Code: W1/W2



**Charm Air Fresheners**

Size: 300ml

Code: CHARM



**Charm Furniture Polish**

Size: 300ml

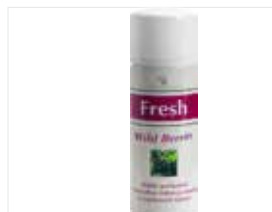
Code: MS22738



**Pledge Furniture Polish**

Size: 300ml

Code: PLEDGE



**Fresh Air Freshener Wild Berries**

Size: 400ml

Code: C053LEV



**Spray & Wipe Surface Cleaner**

Size: 5lt & 750ml Trigger RTU

Code: A028EEV5 & A028AEV



**L.S.P Surface Polish**

Size: 5lt & 750ml Trigger RTU

Code: A043EEV5 & A043AEV

CHEMICALS



# INDUSTRIAL CLEANING



CAR VALETING



WEED KILLER



## Janitorial & Industrial Aerosols



**Brake & Clutch Cleaner**

Size: 400ml

Code: R202



**Electrical Cleaner**

Size: R235

Code: 400ml



**Micro Air Dust**

Size: 400ml

Code: R241



**Silicone Spray**

Size: 400ml

Code: R217



**Anti Static Foaming Cleaner**

Size: 400ml

Code: R245



**Graffiti Remover**

Size: 400ml

Code: R251



**Ink & Gum Remover (Citrus Based)**

Size: 400ml

Code: R255



**Stainless Steel Cleaner**

Size: 400ml

Code: R258



**Chewing Gum Remover**

Size: 400ml

Code: R262



**Food Safe Lubricant**

Size: 400ml

Code: R219



**Seize Release Penetration Oil**

Size: 400ml

Code: R275



**Apple Dashboard Renovator**

Size: 400ml

Code: R200

## Car Valeting Chemicals



**Alloy Shine Wheel Cleaner**

Size: 5lt/25lt

Code: TRBC55/TRBC525



**Black Magic Solvent Based Tyre Sheen**

Size: 5lt/25lt

Code: TRB0034/TRBBM25



**Plastic Dressing/Bumper Gel**

Size: 5lt

Code: TRB0039



**Crystal Clear Glass Cleaner**

Size: 1lt/5lt/25lt

Code: TRB0030/CRYSTAL/CC25



**Hydrofoam Upholstery/Carpet Cleaner**

Size: 5lt/25lt

Code: HYDROFOAMS/25



**PVC Sheen Silicone Based Dashboard Renovator/ High Gloss**

Size: 5lt/25lt

Code: PVC5/PVC25



**Quick 'n' Easy Shine Dashboard Cleaner**

Size: 5lt

Code: QUICK5



**Tar & Glue Remover Solvent Based**

Size: 5lt/25lt

Code: TGS/TG25



**The Best General Purpose Cleaner**

Size: 5lt/25lt

Code: BEST5/BEST25



**5lt Container including Lid**

Size: 5lt

Code: 5LT



**25lt Drum Pump**

Size: Each

Code: SYPHON25



**25lt Container including Lid**

Size: 25lt

Code: 25LT

## Traffic Film Removers/Degreasers



**Traffic Film Remover for use through Pressure Washers.**  
Different strengths available. Will quickly and efficiently clean cars, industrial and commercial vehicles. Formulated to avoid streaking and staining on all types of bodywork.

<b>Code:</b>	<b>Size:</b>
TFR160	5lt/25lt/205lt
TFR200	5lt/25lt/205lt
TFR400	5lt/25lt/205lt
TFR500	5lt/25lt/205lt



**Traffic Film Remover 600 is a super concentrated formulation**  
Provides the ultimate protection for your paintwork and gives that lasting shine. Heavy duty cleaning action. Spray on and hose off - does the cleaning for you  
Removes dirt, road film, grease, oil, insects etc

Super concentrate - Dilutes up to 180:1  
Specifically developed for lorries, vans, boats, trailers, tractors, bulldozers and other heavy machinery.

<b>Code:</b>	<b>Size:</b>
TFR600	5lt/25lt/205lt



**NON CAUSTIC Traffic Film Remover -**  
Formulated to avoid streaking and staining on all types of bodywork. It is bacteriostatic and is therefore highly recommended where a disinfectant is to be subsequently used, for example on the farm or in the food industry.

### BENEFITS AND FEATURES

Does not contain caustic soda. Suitable for bodywork, chassis and machinery. Will leave a streak free finish. Safe and very economical in use. Non-tainting colour or odour

<b>Code:</b>	<b>Size:</b>
TFR200NC	5lt/25lt/205lt
TFR400NC	5lt/25lt/205lt



**Hyper Shampoo - Designed for Rollover Car Washes**  
It does not contain caustic soda or harmful chemicals and is suitable for use either by hand or through an automatic brush wash machine.

<b>Size:</b>	<b>Code:</b>
5lt	HYPERSS
25lt	HYPERSS25
205lt	HYPERSS205

Phone for details of our full range of car wash chemicals



**Hyper Cold Wax - for use with all Automatic VEHICLE Washing Machines to ensure that the vehicles being cleaned are coated in a protective wax coating and reduces spotting on drying. Protects cars paint work from oxidation caused by strong sunlight.**

<b>Size</b>	<b>Code:</b>
5lt	HYPERW5
25lt	HYPERW25
205lt	HYPERW205

Phone for details of our full range of car wash chemicals



**Powerwash Wax - Promotes rapid drying without streaking**  
Professional spray on protective wax coating which reduces spotting on drying.

Protects cars paint work from oxidation caused by strong sunlight.

<b>Size:</b>	<b>Code:</b>
5lt	PWW5
25lt	PWW25
205lt	PWW205

Phone for details of our full range of Powerwash chemicals

## Industrial Chemicals

*Full range of industrial  
chemicals available*



**Acetone**

Size: 5lt/25lt

Code: ACETONE5/ACETONE25



**Chemical Toilet Disinfectant**

Size: 5lt/25lt

Code: AIRSAN5/AIRSAN25



**Caustic Soda Solution**

Size: 5lt

Code: CAUSTIC5



**Cement Bonder**

Size: 5lt/25lt

Code: CB5/CB25



**Clinic Weedkiller**

Size: 5lt

Code: CLINIC



**Deionised Water**

Size: 5lt/25lt

Code: DW5/DW25



**Hydrochloric Acid - Available**

18%/28%/36%

Size: 5lt/25lt/205lt

Code: HCL Strength/Size



**Isopropanol Alcohol - IPA**

Size: 5lt/25lt

Code: IPA5/IPA25



**Mastic Remover**

Size: 5lt/25lt

Code: MR5/MR25



**Methanol**

Size: 25lt

Code: METHANOL

This is available in larger sizes



**PVA Wood Glue**

Size: 5lt

Code: PVA5



**Thinners**

Size: 5lt/25lt

Code: THINNER55/THINERS25

## Spill Kits



**All types of Spill Kits and accessories available - cushions, booms, kits, socks, mats, etc. Phone for more details**



**Premuim Absorbent Granules**

**Size: 20lt**

**Code: KU62**



**Industrial Spillage Absorbent Granules**

**Size: 20lt**

**Code: KU20**



**25lt On The Go Spill Kit**

**Size: 25lt**

**Code: SK25**



**Oil Only Fork Lift Spill Kit**

**Size: 15lt**

**Code: SKFL150**



**Chemical Only Fork Lift Spill Kit**

**Size: 15lt**

**Code: SKFL15C**



## Specialised Wipes & Cloths



### Grime eez Multi Wipe

**Size:** 150 wipes **Code:** GRIMEEZ

GrimeEez® Multi will clean hands and degrease hands and surfaces without the need for water.



### Buddi Industrial Hand Wipes

**Size:** 150 wipes **Code:** ROSE1BHW

Removes dirt, grease and grime rapidly and effectively, Multi purpose wipes, Suitable for use on hands, tools & surfaces. Dermatologically tested. 150 pre-moistened wipes.



### Deb Hand Cleansing Wipes

**Size:** 70 wipes **Code:** TUF70WP

Specialist wipes for removing paints, inks, resins, adhesives and most other print and paint-shop contaminants



### Surface Safe Sanitising Wipes

**Size:** 500 wipes **Code:** SSSW

Tested and approved to European norms EN1276 bactericidal efficacy and EN1650 fungicidal activity



### Grime eez Graffiti Wipe

**Size:** 150 wipes **Code:** Graffiti

GrimeEez® Graffiti dissolves graffiti rather than burns. These moist wipes require no additional liquids



### Probe Wipes

**Size:** 200 wipes **Code:** PROBEW

Tested and approved to European norms EN1276 bactericidal efficacy and EN1650 fungicidal activity



### Large Dry Patient Wipes

**Size:** 24 x 100wipes **Code:** R102

Strength and softness combined, economical for everyday use.



### Multi Surface Detergent Wipes

**Size:** Tub 225 **Code:** R512

Alcohol & disinfectant free, effective removal of dirt and grime



### Skin Cleansing Wipes

**Size:** 150 Wipes **Code:** R380

Wet wipes for gentle cleansing, alcohol,lanolin and paraben free, dermatologically tested



### Hard Surface Sanitising Wipes

**Size:** 200 Wipes **Code:** R320

Contains an alcohol free biocidal formulation that is effective against a range of bacteria, passes EN1276



### Emollient Skin Cleansing Foam

**Size:** 12 x 500ml **Code:** R323

Gentle foam to cleanse, deodorise and condition the skin. Alcohol, lanolin and paraben free, dermatologically tested



### Body fluid spill kit for hygienic removal of blood, urine and vomit

including absorbent compound, disinfectant, gloves, apron, scoop, towels, antiseptic wipes and waste bag.

**Size:** Single **Code:** Body

## Specialised Wipes & Cloths



**Best White Cotton Polishing Cloths**

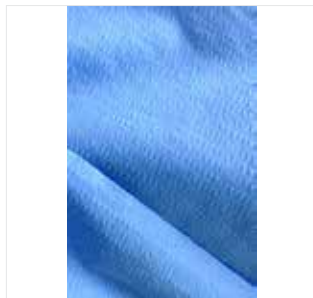
Size: 10kg Code: PCTBW

Ideal for all types of polishing



**Stockinette Rolls**

Size: 800gms Code: JQ800G



**Lint Free Atlas Cloth**

Size: 10 x 50 cloths Code: WSATLAS

Ideal for all Solvent & Spirit Wiping applications



**Premuim Uniwipes**

Size: 5kg Code: WSPREM

Absorbent & Low-Linting, Cannot Scratch



**Eco-Jay Industrial Wipe**

Size: 4kg Code: WSJAY4

Absorbent & Durable - Perfect as Tool & Machine wipes, Ideal for Oil, Grease and Grime wiping applications



**Terry Towelling Rags**

Size: 10kg Code: PCTTT

Ideal for ally types of use , workshop, bodyshop, oils and spills etc.



**Cotton Coloured Polishing Cloths**

Size: 10kg Code: PCTCCW

Ideal for garages and bodyshops and valet bays



**Vacuum Packed Coloured Rags**

Size: 10kg Code: PCTVPR

A cheap value rag for all types of workshop uses, ideal for cleaning oil



LITTER PICKERS

WINDOW CLEANING

# CLEANING MATERIALS



CLOTHS

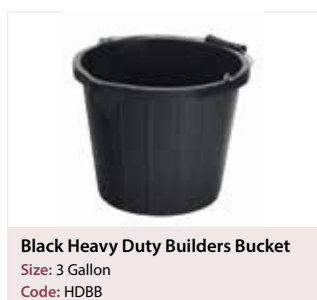


SCOURERS

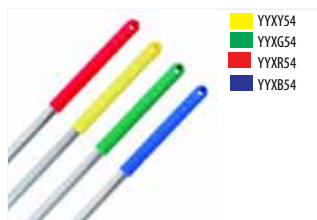
BUCKETS



## Mops, Handles & Buckets



## Mops, Handles & Buckets



YYXY54  
YYXG54  
YYXR54  
YYXB54

**Colour Coded Exel Metal Mop Shaft**  
Screw Thread to Fit Mop Range  
Size: 125cm



**Aluminium Kentucky Mop Shaft**  
Size: 137cm  
Code: KYS



Available colours  
KMCY  
KMCG  
KMCR  
KMCB

**Colour Coded Plastic Kentucky Clips**  
Accepts any Handle  
Compression Fitting



**Vileda Flat Mopping System**  
Size: 25lt  
Code: 116486



**Vileda Microlite Mop Pad**  
Size: 40cm  
Code: 116480



**Vileda Safe Mop Pad**  
Size: 40cm  
Code: 122500



**Vileda Ultra Speed Mop Frame**  
Size: 40cm  
Code: 113970



**Vileda Mop Refill Head**  
Size: 10cm x 33cm  
Code: VMH/Colour



**Vileda Aluminium Handle**  
Size: 142cm  
Code: VMS/Colour



**Vileda Plastic Mop Bucket**  
Size: 10lt  
Code: VMB/Colour



**Cheapie Chappie Janitorial Cart**  
Size: Each  
Code: CT173



**Replacement Yellow Bag**  
Size: Each  
Code: CT173BAG



## Dust Control and Cloths



**Yellow Dusters**

Size: 20 x 16"/Pack 10

Code: YS2014



**Microfibre Cleaning Cloths**

Size: 40 x 40cm/Each

Code: MICROFIBRE/\*\*



**Heavy Duty Floor Cloth**

Size: 35 x 47cm/Pack 10

Code: RSL11616



**Terry Checked Tea Towel**

Size: 46 x 68cm/Pack 10

Code: RS0012



**White Cotton Tea Towel**

Size: 48 x 70cm/Pack 10

Code: TW1929



**Cotton Printed Glass Cloth**

Size: 50 x 76cm/Pack 10

Code: RS0015



**Stockinette Dish Cloths**

Size: 30 x 30cm/Pack 10

Code: BX1114/\*\*



**Handy Semi-Disposable Wipes**

Size: 60 x 30cm/Pack 50

Code: HANDY/\*\*



**Antibacterial Cleaning Cloth**

Size: 50 x 36cm/Pack 25

Code: KLENZEEN/\*\*



**Green Scouring Pad**

Size: 9 x 6"/Pack 10

Code: MP802531



**Stainless Steel Scourer 40gms**

Size: Pack 10

Code: SSSC



**Copper Pot Scourers 15gms**

Size: Pack 25

Code: BK0008

## Hard Surface Cleaners & Washroom Hygiene



**Sponge Scourers**

Size: 15 x 10cm/Pack 10

Code: SP0014



**Heavy Duty Soap Filled Pads**

Size: Each

Code: BK00071



**Miracle Clean Stain Eraser**

Size: Pack 12

Code: Miracle Clean



**White Heavy Honeycomb Cloth**

Size: 46 x 71cm/Pack 10

Code: TH2030



**Lambswool 2' Duster**

Size: Each

Code: RS0005



**Feather Dusters**

Size: 2' & 4'

Code: FD2/FD4



**Dustbeater Frame Heads**

Size:

Code:



**Dustbeater Replacement Heads**

Size: 16", 24" 32"

Code: CT0013/11/09



**V Sweeper Frame & Handle**

Size: Each

Code:



**Domed Cobweb Brush Complete with shaft**

Code: COBWEB



**Cobweb Brush Head**

Size: 14"

Code: COBWEB1



**V Sweeper Replacement Heads**

Size: Pair

Code: RS0008

## Window Cleaning



**Economy Window Bucket**

Size: 12lt

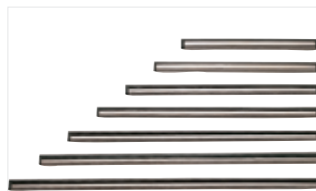
Code: WCB12



**Hard Grade Rubber Blade**

Size: 36"

Code: 755R



**Silver Channel and Rubber**

Size: 12", 14", 18" & 24"

Code: 745CWR/\*\*



**Brass Squeegee c/w Handle**

Size: 12"/Each

Code: B30



**Silver Brand Handle**

Size: Each

Code:



**Window Squeegee c/w Handle**

Size: 12"/Each

Code: 730



**Winwash Applicator Handle**

Size: 18"/35cm

Code: 718HO



**Winwash Sleeve**

Size: 18"/35cm

Code: 718RH



**Synthetic Chamois**

Size: 50 x 36cm/Pack 25

Code: CHAMOIS



**Window Scrim Cloths**

Size: 36" x 36"

Code: SCRIM



**Safety Pocket Size Scraper**

Size: Each

Code: MHSC



**Replacement Blades**

Size: Pack 100

Code: 444R

## Brushes, Squeegees



Available sizes  
12" HL0001  
18" HL0004  
24" HL0006  
36" HL0008

**Soft Natural Coco Fill Platform  
Brush. Ideal for Dry Conditions and  
Indoor Use**



Available sizes  
12" HL0002  
18" HL0005  
24" HL0007  
36" HL0009A

**Medium Stiff Bassine Platform  
Brush Head. Ideal for Wet/Dry  
Conditions and Indoor/Outdoor Use**



**Stiff Bassine Sweeping Broom**  
Size: 13"  
Code: HL0003



**Union Fill Deck Scrubber Head**  
Size: 9"/235mm  
Code: D93WW



**Hand Bassine Fill Scrubbing Brush**  
Size: 203 x 56mm  
Code: HL0009



Available sizes  
Soft HL0013  
Stiff HL0013S

**Natural Coco Fill Bannister Brush**  
Available Soft and Stiff  
Size: 280mm



**Soft Blue PVC Socketed Broom**  
Size: 279 x 64mm  
Code: HL0042



**Stiff Red PVC Socketed Broom**  
Size: 279 x 64mm  
Code: HL0043



**4 Row Wire Scratch Brush**  
Size: 300mm  
Code: HL0015



Available sizes  
18" HL0019  
24" HL0020

**Wooden Squeegee with Heavy Duty  
Rubber Blade. Good for Outdoor  
Jobs. Various Sizes**



Available sizes  
22" HL0021  
30" HL00202

**Light Metal Squeegee with Mousse  
Rubber. Ideal for Contract Use.  
Various Sizes Available**



**Flagged PVC Fill Window Brush**  
Size: 152mm  
Code: HL0012

## Brushes, Squeegees



**Long Handled Dustpan & Brush Set**

Size: Each

Code: HL0054



Available colours  
 WPSY  
 WPSG  
 WPSR  
 WPSB

**Dustpan & Brush Set**

Size: Each

Code: WPS/\*\*



**Metal Hand Shovel Wooden Handle**

Size: 460 x 230mm

Code: HL0028



**Swivel Action Scourer Applicator**

Size: 17 x 10 x 23cm

Code: R8700



**Hand Held Scourer Applicator**

Size: 5.8 x 10 x 23.6cm

Code: R8701



White-Light  
 Blue-Medium  
 Black-Heavy

**Heavy Duty Scouring Pads to Fit**

Size: 25.4 x 16.5cm

Code: R833



**Stainless Steel Scraper c/w Handle**

Size: 130cm

Code: MSC1



**Replacement Floor Scraper Blades**

Size: 200 x 1.3mm

Code: MBLD1



**Litter Picker for Roadside Litter**

Size: 32"/82cm

Code: CC940



**White Toilet Brush**

Size: Each

Code: HL0018



**Fully Enclosed Toilet Brush Set**

Size: Each

Code: 444



**Semi Enclosed Toilet Brush Set**

Size: Each

Code: RSTB

## Colour Coded Hygiene Brushes



### Flat Sweeping Broom

Crimped Fill Hygiene Brush  
Industrial Dishwasher Safe  
FDA Approved Materials  
**Size: 280 x 58mm**

Available colours  
 Yellow B1732Y  
 Green B1732G  
 Red B1732R  
 Blue B1732B



### Flat Sweeping Broom

Crimped Fill Hygiene Brush  
Industrial Dishwasher Safe  
FDA Approved Materials  
**Size: 457 x 75mm**

Available colours  
 Yellow B896Y  
 Green B896G  
 Red B896R  
 Blue B896B



### STIFF DECK SCRUBBER

Crimped Fill Hygiene Brush  
Industrial Dishwasher Safe  
FDA Approved Materials  
**Size: 280 x 58mm**

Available colours  
 Yellow B928Y  
 Green B928G  
 Red B928R  
 Blue B928B

Available colours  
 Yellow ST5Y  
 Green ST5G  
 Red ST5R  
 Blue ST5B



### Double Wing Scrubbing Brush

Industrial Dishwasher Safe  
FDA Approved Materials  
Available in 4 Colours  
**Size: 209mm**

Available colours  
 Yellow NA4Y  
 Green NA4G  
 Red NA4R  
 Blue NA4B



### Professional Hygiene Nail Brush

Industrial Dishwasher Safe  
FDA Approved Materials  
Available in 4 Colours  
**Size: 121mm**

Available colours  
 Yellow PLSQ45Y  
 Green PLSQ45G  
 Red PLSG45R  
 Blue PSLG45B



### Light Plastic Squeegee

New Green Rubber & Frame made of FDA Approved Materials. Ideal for concrete, asphalt and other smooth floors  
**Size: 450mm/18"**

Available colours  
 Yellow PLSQ55Y  
 Green PLSQ55G  
 Red PLSG55R  
 Blue PSLG55B



### Light Plastic Squeegee

New Green Rubber & Frame made of FDA Approved Materials. Ideal for concrete, asphalt and other smooth floors  
**Size: 550mm/22"**

Available colours  
 Yellow PSC2Y  
 Green PSC2G  
 Red PSC2R  
 Blue PSC2B



### Plastic Hand Scraper

Anti-Microbial & Metal Detectable & Antistatic. Lightweight & Non Corrosive  
**Size: 247 x 110mm**

Available colours  
 Yellow PSH7Y  
 Green PSH7G  
 Red PSH7R  
 Blue PSH7B



### Soft Grip Hand Shovel

Fully Colour Coded Shovels are ideal for use in HACCP systems to avoid cross contamination.  
**Size: 320 x 260mm**



Available colours  
 Yellow B1060Y  
 Green B1060G  
 Red B1060R  
 Blue B1060B



### Crimped Filled Hand Brush

Industrial Dishwasher Safe  
FDA Approved Materials  
**Size: 140mm**



Cleaning Materials - Floor Pads



**Red Floor Pad - Scrubbing/Cleaning**

Size:	Code:	
15"	FP15R	Case 5
16"	FP16R	Case 5
17"	FP17R	Case 5
18"	FP18R	Case 5



**White Floor Pad - Light Polishing**

Size:	Code:	
15"	FP15W	Case 5
16"	FP16W	Case 5
17"	FP17W	Case 5
18"	FP18W	Case 5



**Black Floor Pad - Aggressive Strip**

Size:	Code:	
15"	FP15B	Case 5
16"	FP16B	Case 5
17"	FP17B	Case 5
18"	FP18B	Case 5



**Tan Floor Pad - Mild Stripping**

Size:	Code:	
15"	FP15T	Case 5
16"	FP16T	Case 5
17"	FP17T	Case 5
18"	FP18T	Case 5



**Green Floor Pads - Scrubbing**

Size:	Code:	
15"	FP15G	Case 5
16"	FP16G	Case 5
17"	FP17G	Case 5
18"	FP18G	Case 5



TOILET ROLLS



# PAPER PRODUCTS



GARAGE ROLLS



DISPENSERS



HAND  
TOWELS



## Disposables



**2ply Blue and White Centre Pull**

Size: 6 x 150mt

Code: CFW150E/CENTREP



**2ply Value Embossed Centre Pull**

Size: 6 x 120mt

Code: RC5281/RC6581



**1ply & 2ply White Mini Centre Pull**

Size: 12 x 120mt/12 x 60mt

Code: RC5102/CFW60E



Available sizes  
10" W RH5404  
20" W RH5412  
10" B RH7228  
20" B RH7229

**2ply White and Blue Couch Rolls**  
available in 10" and 20" - Used for  
couches, bibs & wiping



**1ply C-Fold Hand Towel Green/Blue**

Size: 2880 Towels

Code: HTB2889/HTG2880



**2ply White Luxury C-Fold Hand**

Size: 2400 Towels

Code: CWT24002



2ply White  
1ply Blue  
1ply Green

**Interfold Hand Towel, available in  
2ply White and 1ply Blue & Green**

Size: 3600 Towels Code: FBT36001



2.25" RT3520  
3" RT3864

**2ply White Jumbo Toilet Rolls**  
Available in 2.25 and 3" Core

Size: 6 x 300mt



2.25" RT3801BU  
3" RT3802BU

**2ply White Mini Jumbo Toilet Rolls**  
Available in 2.25" and 3"

Size: 12 x 150mt



**2ply White Bulk pack Toilet Tissue**

Size: 36 x 252 sheets

Code: FT4502



**2ply White Luxury Toilet Rolls**

Size: 36 Rolls of 320 Sheet

Code: RT3644



**Luxury 2ply White Toilet Rolls**

Size: 40 Rolls

Code: PREM25

## Dispensers



**Jumbo Toilet Roll Dispenser**

Size: Each

Code: DPRT18



**Mini Toilet Roll Dispenser**

Size: Each

Code: DPRT17



**Twin Toilet Roll Dispenser**

Size: Each

Code: TTRD



**Bulk Pack Toilet Tissue Dispensers**

Size: Each

Code: DPFT05



**Multi-Fold Hand Towel Dispenser**

Size: Each

Code: GD839



**C-Fold Hand Towel Dispenser**

Size: Each

Code: DPFC05



**Centre Feed Dispenser**

Size: Each

Code: DPRC11



**Mini Centre Feed Dispenser**

Size: Each

Code: DPRC10



**Bulk Fill Soap Dispenser**

Size: Each

Code: D011AEV



**Stainless Steel Jumbo/Mini**

Size: Jumbo/Mini Jumbi

Code: J401/J403



**Stainless Steel Hand Towel**

Size: Each

Code: J301



**Stainless Steel Soap Dispenser**

Size: 1200ml

Code: SD1500

## Paper Hygiene Systems - SCA Lotus



### SCA Enmotion Dispensers

**Size:** Each **Code:** ENMOTION

Available Touchfree or Lever Operated  
Blue, Stainless Steel and White  
Ideal for all hygiene areas



### SCA Minismartone & Smartone Dispensers

**Size:** Each **Code:** SMARTONEDISP/MINI

Available in Blue, Stainless Steel and White  
in both Minismartone and Smartone



### SCA Ensure Compact System

**Size:** Each **Code:**

The Lotus Ensure Compact System Double Toilet Roll Dispenser is a durable toilet roll dispenser suitable for frequent daily use. Available in White and Blue

## SCA EnMotion Paper



### SCA Enmotion Paper Rolls

**Size:** Case 6

**Code:** White 1ply 6 x 143m J90227  
White 2ply 6 x 143m J90225  
Blue 1ply 6 x 143m J90226

## SCA Smartone Paper



### SCA Minismartone & Smartone 2ply White

**Size:** Case

**Code:** MiniSmartone 12 x 620 Sheets  
Smartone 6 x 1150 Sheets

## SCA Ensure Compact



### SCA Ensure Compact System 2ply White

**Size:** Case 36 x 900 Sheets

**Code:** The rolls are, on average, up to 9 times the length of a conventional household toilet roll but have the same overall diameter.

## Paper Hygiene Systems - Connect Hygiene



### Leonardo Roll Towel Dispensers

**Size:** Each **Code:**

Available Touchfree, Tear & Dry or Leverturn  
All of our Leonardo roll towel dispensers  
present the towel flat to the user to  
maximise surface area



### Leonardo Versatwin Plastic Toilet Roll Dispenser

**Size:** Each **Code:**

The dispenser is compact, versatile and  
cost-efficient - it also has a transparent  
cover for easy view of paper status.



### Leonardo Small Plastic Hand Towel Dispenser

**Size:** Each **Code:**

Leonardo Multifold hand towel dispensing  
system offers a space saving, simple and  
reliable hand drying solution

## Leonardo Roll Towels



### Leonardo Roll Towels

**Size:** Case 6

**Code:** White 1ply 6 x 200m RTW200  
White 2ply 6 x 175m RTW175  
Blue 1ply 6 x 200m RTB200

## Leonardo Versatwin



### Leonardo Versatwin Toilet Rolls 2ply White

**Size:** 24 x 125mt Rolls

**Code:** JT81SW  
100% recycled.

## Leonardo Multifold



### Leonardo Multifold White Hand Towels 1ply

**Size:** 3000 Sheets

**Code:** M500



## Paper Products - Tork



**Tork Reflex Roll Towels Blue & White**

**Size:** 6x150.8mt

**Code:** REFLEXB/BLUE REFLEXW/WHITE

2ply recycled paper, food contact approved, ideal for all types of wiping



**Tork 420 2ply White Rolls**

**Size:** 6 x 160mt **Code:** 101260

An extremely soft wiper tissue ideal for cleaning glass and other easily scratched surfaces. Leaves no trace on the wiped surface. Gentle on hands



**Tork 420 Wiper Combi Roll**

**Size:** 1 x 221mtr **Code:** 130042

High capacity, portable and dockable dispenser carton system, perfect for high use areas



**Tork 420 Mini Centre Pull 2ply**

**Size:** 12 x 75mt **Code:** 101230

A superior quality compact mini centrefeed system. Rolls are supplied without cores, ready to fit.



**Tork Premium Interfold Hand Towel**

**Size:** 2310 Towels **Code:** 100288

This premium handtowel is larger and has more absorbent towels so it has lower usage and maintenance costs.



**Tork Advanced ZigZag Hand Towel**

**Size:** 3750

**Code:** 290163

Good absorption capacity, efficient hand drying. Special embossing adds volume and comfort



**Tork Mini Centre Pull 1ply White**

**Size:** 12 x 120mt **Code:** 100152

A multipurpose paper for light wiping tasks. Ideal for glass cleaning and suitable for hand wiping



**Tork Z-Fold Marathon Hand Towel**

**Size:** 2400 towels **Code:** J95233C

High quality paper disposable hand towels, 2ply White.



**Tork Bulk Pack Toilet Tissue**

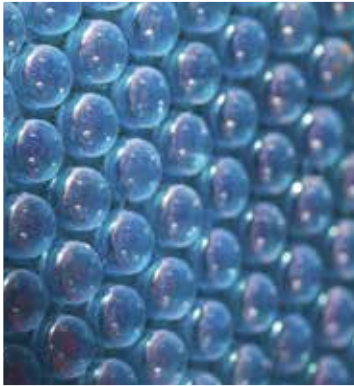
**Size:** 36 x 242 sheets **Code:** TORKBP

Zig zag folded toilet tissue in sheets. Hygienic as one sheet at a time is dispensed, Extra soft with high brightness

ADHESIVE  
TAPES



# INDUSTRIAL PACKAGING



BUBBLE  
WRAP



FOAM

PACKING



PAPER

## Industrial Packaging

Available sizes  
300 x 100mt  
500 x 100mt  
600 x 100mt  
750 x 100mt  
1000x 100mt  
1200x 100mt  
1500 x 100mt



### Small Jiffy Brand Bubble Wrap

Various Roll Sizes Available  
Made from low density polyethylene (LDPE), our bubble wrap is also very environmentally friendly, being fully reusable and recyclable!

Available sizes  
1000 x 300mt  
1500 x 300mt  
1000 x 120mt  
1000 x 75mt



### Jiffy Foam Rolls

Moisture resistant and non-abrasive, foam is the ideal solution for panel and surface protection or interleaving

Available sizes  
650 x 75mt  
900 x 75mt  
1000 x 75mt  
1200 x 75mt  
1500 x 75mt



### Corrugated Rolls Single Face

Made from 75% recycled paper  
Strong, flexible corrugated paper is easy to use straight from the roll and trim to size.

Available sizes  
26" x 75mt  
36" x 75mt  
40" x 75mt  
72" x 75mt



### Pure Kraft Paper Rolls

Pure kraft paper rolls are 70gsm paper, recyclable, biodegradable and reusable  
Made from pure natural kraft paper

Available sizes  
1/2m x 100mt  
2/4m x 50mt  
1/4m x 50mt



### Heavy Duty Polythene Sheeting

400 Gauge pure film. Perfect for heavy duty, all round protection and as a covering for protecting floors, roofs, furniture, etc.

Available sizes  
PW400/17  
PW400/20



### Pallet Wrap

17mu & 20mu Extended Core  
Long cores for easy and comfortable hand dispensing  
Also known as stretch wrap



### Layflat Tubing 65mu

PHONE FOR VARIOUS SIZES

High strength clear polythene plastic layflat tubing and ideal for protecting many different objects. You can use a heat sealer/ stapler to seal both ends. Lay tubing not only protects items it also provides you with a good professional finish.



### LD Garment Covers

Size: 24x24x36" Code: GARMENT  
Roll 700

Ideal for laundrettes and ironing companies to protect shirts, suits, etc



### Masking Tape

Size:	Code:	
25 x 50mt	WILLOW	Roll
50 x 50mt	LARCH	Roll



### Clear Vinyl Tape

Size:	Code:	
12 x 66mt	MIMOSA	Roll
19 x 66mt	FUSCHIA	Roll
25x66mt	PETUNIA	Roll

## Industrial Packaging



### Flopak Polystyrene Packaging

**Size:** Each **Code:** FLOPAK

100% recycled, 100% degradable  
Excellent cushioning against shock and crushing



1000 x 300mt 1000 x 300mt  
1500 x 300mt 1500 x 300mt  
1000 x 120mt 1000 x 120mt  
1000 x 75mt 1000 x 75mt

### Polygrip Self Seal Bags

Plain and Write on Panel. Bags made from high quality clear polythene, suitable for food use. Grip Seal bags are strong and resealable over and over again. All sizes suitable for food use



### Packaging Tape Dispenser

**Size:** Each **Code:** H11CP

Tape guns come with an ergonomic pistol grip, and adjustable tape break for maximum efficiency.



### Clear/Buff Vinyl Packaging Tape

Ideal adhesive tape for carton sealing and general packaging

**Size:** 48mm x 60mt  
**Code:** ASH/LAUREL/OSIER



### Fragile Packaging Tape

**Size:** 50 x 66mt **Code:** FRAGILE

Use with tape gun/bench tape dispensers  
Message Tape can be custom printed  
Ask for details



### Bag Sealing Tape

**Size:** 9mm x 66mt

**Code:** POPPY  
FLAX



### Polyprop Strapping

### Polyprop & Steel Strapping

**Size:** Various Sizes

**Code:** Available to order, phone for sizes and prices for any strapping and clips



### Machine Stretch Film

### Machine Stretch Film

**Size:** Various Sizes/Micron

**Code:** Available to order, phone for up-to-date prices and sizes

## Industrial Bin Liners



Codes:  
140 - MULTIHEAVY  
180 - GOLD  
280 - SOLAR

**180g Extra Heavy Duty Black Liner**  
Size: 18 x 29 x 39" Case 100 / 200



**Yellow Clinical Waste Sack**  
Available in 100g and 160g  
Size: 18 x 29 x 39" Case 250  
Code: CLINALWS



**Clear Bin Liners**  
Available in 100g and 160g  
Size: 18 x 29 x 39" Case 200  
Code: 182939100/100g  
182939c/160g



Codes:  
RED182939  
GREEN182939  
BLUE182939  
YELLOW18293

**Coloured Bin Liners**  
Size: 18 x 29 x 39" Case 200  
140gauge



**400g Black Compactor Sack**  
Size: 23 x 33 x 47" Case 100  
Code: COMPACTOR



**500g Extra Heavy Clear Compactor**  
Size: 23 x 33 x 47 Case 100  
Code: 510870WH



WHEELIE/Black  
WHEELIE/Clear

**120g Wheelie Bin Liners**  
Size: 30 x 46 x 54" Case 100  
Available in Black and Clear



Codes:  
2030B/Black  
2030C/Clear

**600g Black and Clear Rubble Sacks**  
Size: 20 x 30" Case 100  
Ideal for logs, sand, bricks, etc.



**480g Blue Aggregate Sacks**  
Size: 20 x 30" Case 100  
Code: AGGREGATE



**White Swing Bin Liners**  
Size: 13 x 23 x 29" Case 1000/100/500  
Code: SWING/SWING1/SWINGHD  
Heavy Duty Swing Bin Liners



**White Pedal Bin Liners**  
Size: 11 x 17 x 18" Case 1000/100  
Code: PEDAL/DK0001



**White Square Bin Liners**  
Size: 15 x 24 x 24" Case 1000  
Code: SQUARE



KNITTED  
& RUBBER  
GLOVES

COATED  
KNITTED  
GLOVES

# PROTECTIVE WEAR

PROTECTIVE  
OVERSHOES



DISPOSABLE  
GLOVES



DISPOSABLE  
APRONS





Protective Care



**First Aid Kits**  
Size: 1-10 and 10-50  
Code: FAK1/FAK5



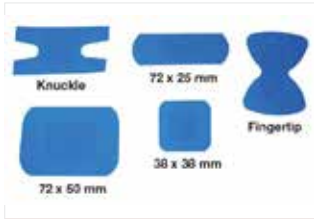
**Eyewash Station**  
Size: Each  
Code: EWS



**Eyewash Refill Bottles**  
Size: 500ml  
Code: EWSB



**Burneze Spray**  
Size: 60ml  
Code: FA003



**Assorted Blue Plasters**  
Size: Pack 100  
Code: FA0008



**Safety Glasses**  
Size: Each  
Code: SG



**Uvex Safety Goggles**  
Size: Each  
Code: UVEX



**Disposable White Coveralls**  
Size: Small/Medium/Large/XL  
Code: DC03M/DC03L/DC03XL/DC03XXL



**Sensolite Disposable Gloves**  
Size: Pack 100  
Code: SENSOLITEM/L



**Disposable Mob Caps White/Blue**  
Size: Pack 100  
Code: MOBCB/MOBCW



**Black Heavy Weight Long Gloves**  
Size: Medium/Large  
Code: GR0012



**Disposable White Visitors Coats**  
Size: Small/Medium/Large/XL  
Code: VISITOR/S/M/L/XL

Gloves, Aprons



Available sizes	Powderfree	Powdered
Small	BVINLPFS	BVINLPS
Medium	BVINLPFM	BVINLPM
Large	BVINLPFL	BVINLPL
Extra Large	BVINLPFXL	BVINLPLX

**Blue Vinyl Powdered/Powderfree Disposable Gloves**  
Meets European Standards EN420, EN388, EN374  
Tested to AQL 4.0 PACKS 100



Available sizes	Powderfree	Powdered
Small	GL6221	GL6421
Medium	GL6222	GL6422
Large	GL6223	GL6432
Extra Large	GL6224	GL6433

**Vinyl Powdered/Powderfree Disposable Gloves**  
Meets European Standards EN420, EN388, EN374.  
Tested to AQL 4.0 PACKS 100



Available sizes	Powderfree	Powdered
Small	LATEXPFS	LATEXPS
Medium	LATEXPFM	LATEXPM
Large	LATEXPFL	LATEXPL
Extra Large	LATEXPFXL	LATEXPLX

**Latex Powdered/Powderfree Disposable Gloves**  
Conform to European Standards EN420, EN388 and EN374.  
Tested to AQL 1.5 PACKS 100



Available sizes	Powderfree	Powdered
Small	NITRILEPFS	NITRILEPS
Medium	NITRILEPFM	NITRILEPM
Large	NITRILEPFL	NITRILEL
Extra Large	NITRILEPFXL	NITRILEXL

**Blue Nitrile Powdered/Powderfree Disposable Gloves**  
European PPE Directive 89/686/EEC. Food contact approved and tested accordance with EN1186 PACK 100



Available Colours

**Disposable Polythene Aprons**  
**Size: 27 x 46" Case 1000/Pack 100**  
Aprons Suitable for Minimum Risk Protection Ensuring a High Level of Hygiene



Codes:  
OVERSLEEVES  
OVERSHOES

**Blue Disposable Oversleeves & Shoes**  
Elasticated edges, tested to food approval Packs 100



FOIL FOOD  
CONTAINERS

# CATERING PACKAGING

CUP  
CARRIERS



COLD  
CUPS

CUP  
CARRIERS



PAPER  
BAGS



Pot Liners



**Small Pot Liner**  
Size: Size 1 Pack 100  
Code: 101



Heat resistant plastic bag that  
lines the Bain Marie pots and can  
withstand heat for up to 24 hours.



**Medium Pot Liner**  
Size: Size 2 Pack 100  
Code: 102



**Large Pot Liners**  
Size: Size 3 Pack 100  
Code: 103



**Pot Liners**  
Size: Size 4 Pack 100  
Code: 104



**Extra Large Pot Liners**  
Size: Size 5 Pack 50  
Code: 105



**Extra Small Pot Liners**  
Size: Size 6 Pack 100  
Code: 106



**Full Size Pot Liners**  
Size: Size 7 Pack 50  
Code: 107



**Soup Kettle Pot Liner**  
Size: Size 9 Pack 50  
Code: 109

## Cutlery, Hot food Boxes



**White Economy Plastic Cutlery**

**Size:** 1000 **Code:** FORK  
KNIVES  
SPOONS



**Black Economy Plastic Cutlery**

**Size:** 1000 **Code:** FORKSB  
KNIVESB  
SPOONSB



**Wooden Degradable Cutlery**

**Size:** 1000 **Code:** BIOFORK  
BIOKNIFE  
BIOSPOON



**Heavy Weight Plastic Cutlery**

**Size:** 1000 **Code:** E01604/5/6



**Wooden Chip Forks**

**Size:** 1000 **Code:** WCF  
Ideal for Fish 'n' Chip Shops, Food Vans and  
all carry out shops



**Wooden Hot Drink Stirrers**

**Size:** 1000 **Code:** 327W  
Biodegradable wooden stirrers, ideal for  
all hot drinks



**Plastic Stirrer**

**Size:** 5000 **Code:** STIRRER  
White Plastic tea and coffee stirrers,  
approximately 11cm



**Plastic Sporks**

**Size:** 250 **Code:** SPORKS  
Black or white plastic sporks, can be  
clipped in to some salad containers and  
ideal for eating cakes on the go



**Plastic Ice Cream Spoons**

**Size:** 1000 **Code:** PICS  
Come in packs of 1000 mixed colours,  
ideal for all types of icecreams

## Hot Food Boxes, Trays & Plates



**HB6 Polystyrene Hot Food Box**

Size: 150 x 150 x 75mm Case 500

Code: HB6



**HB9 Polystyrene Hot Food Box**

Size: 185 x 145 x 60mm Case 500

Code: HB9 (HP2)



**HB10 Polystyrene Hot Food Box**

Size: 240 x 145 x 66mm Case 500

Code: HB10 (HP3)



Codes:  
CHIPPY16x13x4cm  
MFC1 18x10x2.5cm  
MFC2 18x13x4cm  
MFC3 22x13x4cm

**White Polystyrene Trays**

Various sizes, available, ideal for all types of food use, chips, fish, etc.



**HB1 Polystyrene Hot Meal Box**

Size: 240 x 200 x 75mm Case 200

Code: HB1



**2/3 Compartment Meal Box**

Size: 240 x 200 x 75mm Case 200

Code: HB2/HB3



WHEELIE/Black  
WHEELIE/Clear

**Eps Diner Pak - Base**

Meal Box Bases, Various sizes available, ideal for all carry out foods



Codes:  
2030B/Black  
2030C/Clear

**EPS Diner Pak - Lids**

Meal Box Lids, Various sizes available, ideal for all carry out foods



**White Foam Trim Plate**

Size: 7" & 9"

Code: 1002364/1008611 (Case 600)



**White Disposable Paper Plates**

Size: 6" Case 1000

Code: PP6



**HP10 Polystyrene Hot Potato Box**

Size: 158 x 115 x 85mm Case 500

Code: HP10



**12oz White Polystyrene Chip Cone**

Size: Case 500

Code: 12C20



## Microwave Containers



### 3 Compartment Microwave Tray

**Size:** 260 x 184 x 34mm **Code:** BLACK3  
Microwaveable packaging with heat tolerance up to 230° F / 120° C  
Safe to freeze & recyclable



### 1 Compartment Microwave Tray

**Size:** **Code:**  
Microwaveable packaging with heat tolerance up to 230° F / 120° C  
Safe to freeze & recyclable



### 2 Compartment Microwave Tray

**Size:** **Code:**  
Microwaveable packaging with heat tolerance up to 230° F / 120° C  
Safe to freeze & recyclable



### Single Cavity Clear Lid

**Size:** **Code:**  
Clear lid for Microwave Trays, Temps up to 230° F / 120° C  
Safe to freeze and recyclable



### Black Microwave Bowls

**Size:** 1000 **Code:**  
Microwaveable packaging with heat tolerance up to 230° F / 120° C  
Safe to freeze & recyclable



### Clear Lid

**Size:** **Code:**  
Clear lid for Microwave Bowls, Temps up to 230° F / 120° C  
Safe to freeze and recyclable



### Clear Microwave Containers complete with Lids

**Size:** 500ml/650ml Case 250  
**Code:** CNT103/CNT104  
Ideal for Carry Out Meals



### Value Microwave Containers complete with Lids

**Size:** 500ml/650ml Case 250  
**Code:** A1C01C/A1C02C  
Ideal for Carry Out Meals at Low Cost



### 4oz, 8oz & 12oz Microwave Pots

**Size:** 1000 c/w Lids **Code:**

## Cups Hot & Cold



### Black Triple Ripple Hot Cup

Size: 260 x 184 x 34mm Code: BLACK3

8oz D02032

12oz D02133

16oz D02034



### Kraft Triple Ripple Hot Cup

Size: Code:

8oz D02012 Case 500

12oz D02013 Case 500

16oz D02014 Case 500



### Ripple Weave Design Hot Cup

Size: Code:

8oz WEAVE8 Case 500

12oz WEAVE12 Case 500

16oz WEAVE16 Case 500



### Enjoy Design Ripple Hot Cup

Size: Code:

8oz D02002 Case 500

12oz D02003 Case 500

16oz D02004 Case 500



### Cafe G Polystyrene Cup

Size: Code:

10oz 10LXG Case 1000

12oz 12LXG Case 1000



### White Polystyrene Hot/Cold Cups

7oz 7LX7 Case 1000

8oz 8LX8 Case 1000

10oz 10LX10 Case 1000

12oz 12LX12 Case 1000



### 7oz Tall White & Clear Water Cups

Size: 2000 Case Code: D544004A5/White  
D544004/Clear

Non Vend Water Cup, suitable for all cold drinks



### 7oz White Non Vend Squat Cup

Size: 2000 Case

Code: SQUAT7

Ideal for Carry Out Meals at Low Cost



### 4oz Paper Cone Cup

Size: 5000 Code: CONECUP

Ideal for water coolers, now completely biodegradable

Cups Hot & Cold



Paper Coca Cola Cups

9oz	DPE9C	Case 2000
12oz	DPE12C	Case 2000
16oz	DPE16C	Case 1000
22oz	DPE22C	Case 1000



Paper Pepsi Cup

9oz	DPE9P	Case 2000
12oz	DPE12P	Case 2000
16oz	DPE16P	Case 1000
22oz	DPE22P	Case 1000



Paper Starball Design Cup

9oz	DPE9	Case 2000
12oz	DPE12	Case 2000
16oz	DPE16	Case 1000
22oz	DPE22	Case 1000



PET Smoothie Cups

Size:	Code:	
8oz	18201	Case 1250
10oz	18206	Case 1250
12oz	18203	Case 1250



Translucent Straw Slot Lid

Size:	Code:	
9/12oz	MK80	Case 2000
16/22oz	MK90	Case 1000



Clear Domed Lid with Hole

Size:	78mm	Code: 18601
Case	1000	
Fits 8oz, 10oz & 12oz		



Vented Lid Fits Polystyrene Cups

7oz	7JL	Case 1000
8oz	8JL	Case 1000
10oz	10JL	Case 1000
12oz	12JL	Case 1000



White Lift & Lock Lids  
Fits Polystyrene Cups

Size:	Code:	
10oz	10FTL	Case 1000
12oz	12FTL	Case 1000



Domed Sip Lid Available White & Black

8oz	A10012	Case 1000
12oz	A10013	Case 1000
16oz	A10014	Case 1000

## Pots & Containers



### Polystyrene Soup Bowl

Size:	Code:	
8oz Bowl	8B20	Case 1000
10oz Bowl	10B20	Case 1000
8/10oz Lid	20JL	Case 1000



### Polystyrene Containers

Size:	Code:	
8oz	8SJ20	Case 500
12oz	12SJ32	Case 500
16oz	16SJ32	Case 500
Lids	32JL	Case 500



### Small Polystyrene Containers

Size:	Code:	
3.5oz	3.5J6	Case 1000
4oz	4J6	Case 1000
Lids	6JL	Case 1000



### 15oz & 20oz Black Ripple Pots

Size:	Code:	
15oz	D43032	Case 500
20oz	D43033	Case 500
Lids	TRIPEL	Case 500



### 12oz & 16oz White Pot Complete with Lid

Size:	Code:	
12oz	KH12A	Case 250
16oz	KH16A	Case 250



### 12oz & 16oz White Hot Food Pails

Size:	Code:	
12oz	DS49002	Case 500
16oz	DS49003	Case 500



### Chinese Design Food Pails

Size:	Code:	
16oz	CHINESEP16	Case 500
26oz	K15	Case 500



### Deli Pots Suitable to Microwave

Size:	Code:	
8oz c/w Lid	CD081	Case 500
12oz c/w Lid	CD121	Case 500
16oz c/w Lid	CD161	Case 500



### Small Portion/Sauce Pots

Size:	Code:	
2oz	200PC	Case 2500
3oz	325PC	Case 2500
4oz	400PC	Case 2500
5oz	550PC	Case 2500

Food Trays & Boxes



**Black Cardboard Chip Tray**  
Size: 145 x 110 x 45mm  
Code: D40103  
Case: 500



**Medium & Large Black Meal Tray**  
Size: 240x135x35mm Case 500  
Code: D40115L/D40115M  
240x160x50mm Case 500



**Black Burger Tray**  
Size: 135 x 135 x 50mm Case 500  
Code: D40113



**Black Cardboard Baguette Tray**  
Size: 275 x 95 x 35mm Case 500  
Code: D42022



**3oz Cardboard Chip Scoop**  
Size: 3oz Case 1000  
Code: DS44101A



**Newspaper Design Cardboard Tray**  
Size: 220/190x115/85x45mm  
Case 250  
Code: 01/FCB1NP



**Newspaper Design Fish 'n' Chip Box**  
Size: 250/220x115/95x60mm  
Case 150  
Code: 01/FCB3NP



**Corrugated Design Pizza Box**  
Size: 7" Case 100  
Code: PIZZA7  
9" Case 100  
Code: PIZZA9  
10" Case 100  
Code: PIZZA10  
12" Case 100  
Code: PIZZA12



**Corrugated Fish & Chip Boxes**  
Size: Medium Case 100  
Code: FISHCHIPM  
Large Case 100  
Code: FISHCHIPL  
DESIGNS MAY VARY - ASK FOR SAMPLE

## Salad & Sandwich Containers



**Hinged Plastic Sandwich Wedges**

<b>Size:</b>	<b>Code:</b>	
Standard	AF200	Case 1000
Deep	ZZ030	Case 500
Triple	TRIPLE	Case 500



**Hinged Plastic Tortilla/Wrap Holders**

**Size:** Case 320      **Code:** TORTILLA



**Hinged Plastic Roll Containers**

<b>Size:</b>	<b>Code:</b>
95 x 95 x 60mm/Case 500	ROLL4
130 x 120 x 60mm/Case 600	ROLL6



**Quarter Hinged Sandwich Pack**

**Size:**      **Code:**



**Hinged Plastic Baguette Container**

<b>Size:</b>	<b>Code:</b>	
7"	HV046	Case 800
9"	BAG9	Case 250



**Hinged Plastic Kiddies Sandwich Pack**

**Size:** Case 600      **Code:** 10082118



**Hinged Plastic Rectangle Salad Box**

<b>Size:</b>	<b>Code:</b>	
375ml	EAMP031	Case 500
750ml	EAMP033	Case 300
1000ml	EAMP034	Case 240



**Virtuweld Oval Salad Containers**

<b>Size:</b>	<b>Code:</b>	
150ml	RPRPH	Case 900
250ml	250VIRT	Case 350
375ml	375VIRT	Case 350
500ml	500VIRT	Case 350



**Small Portion Pots & Lids**

<b>Size:</b>	<b>Code:</b>	
2oz	200PC/200PC	Case 2500
3oz	325PC/300PCL	Case 2500
4oz	400PC/400PCL	Case 2500
5oz	550PC/400PCL	Case 2500

## Kraft Sandwich/Salad Holders



**Kraft Salad Box**

**Size:** 200/180x120/100x50mm

**Case** 200

**Code:** 01/SP2TTKR

Biodegradable



**Baguette Wrap & Clasp Holder**

**Size:** 210x251.5mm

**Case** 500

**Code** 01/CBG6K

Biodegradable



**Sandwich Wrap & Clasp Holder**

**Size:** 120x353mm

**Case** 500

**Code:** 01/CS56K

Biodegradable



**Kraft/Film Baguette Wrap**

**Size:**

**Case** 1000

**Code:** 168E

Biodegradable



**Kraft/Film Bloomer Wrap**

**Size:** 170 x 50 x 125mm

**Case** 1000

**Code:** 154W

Biodegradable



**Kraft Deepfill Sandwich Wedge**

**Size:** 123x72x123mm

**Case** 500

**Code:** 01/ST11W2

Biodegradable



**Kraft Sandwich Holder**

**Size** 125x65x20/70mm

**Case** 500

**Code:** 01/SOFATR

Biodegradable

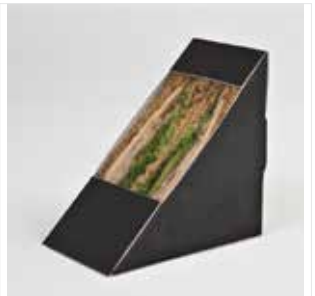


**Kraft Window Sandwich Bag**

**Size**

**Code:** KWSB

Biodegradable



**Elegance Deepfill Sandwich Wedge**

**Size:** 123x72x123mm

**Case** 500

**Code:** 01/ST11EL

Biodegradable





## Biodegradable Range



**Biodegradable 10 2/3 Comp Plate**  
Size: 10" Case 500  
Code: 91009



**Biodegradable Compartment Box**  
Size: 185 x 145 x 60mm Case 500  
Code: HB9 (HP2)



**Biodegradable Burger Box**  
Size: 150 x 150 x 75mm Case 500  
Code: 91014



**Biodegradable Medium Food Box**  
Size: 225 x 150 x 75mm Case 250  
Code: 91018



**Biodegradable Large Food Box**  
Size: 225 x 225 x 75mm Case 200  
Code: 91015



**Biodegradable Soup/Desert Bowl**  
Size: 12oz/16oz Case 1000  
Code: 91003/91004



**Biodegradable Oval Plates**  
Size: 10 x 12" Case 500  
Code: 91002



**Biodegradable Square Plates**  
Size: 15cm/20cm/26cm Case 500  
Code: 91007/91006/91005



**Biodegradable Rectangle Plate**  
Size: 260 x 130cm Case 500  
Code: 91008



**Biodegradable Small Round Plates**  
Size: 6 7/8" Case 1000  
Code: 91001/91002



**Biodegradable Large Round Plates**  
Size: 9 1/2"/10" Case 500  
Code: 91010/91011



**Biodegradable Soup Cotainers**  
Size: 8oz/12oz/16oz  
Code: 49001/49002/49003

## Catering Disposables - Foil Containers



**Foil Takeaway Containers**

**Size:** **Code:**  
No.1 12020  
No.2 CX004  
No.6 CX016



**Foil Tray Bake Large and Half Size**

**Size:** 323x201x30mm (Case 250)  
**Code:** TRAYBAKE



**Square Foil Container**

**Size:** **Code:**



**3 Compartment Meal Tray/Lid**

**Size:** 227x177x39mm **Code:** 12038  
**Case:** 300



**Foil Steak Pie Ashet**

**Size:** **Code:** STEAKPIEHALF  
1/2lb, 3/4lb, STEAKPIE34  
1lb, 1.5lb STEAKPIE1/112



**6" Foil Flan Dish**

**Size:** 165 x 28mm  
**Case:** 1000  
**Code:** APPLE1



**Foil Pie Plate**

**Size:** 227mm x 18mm  
**Case:** 1000  
**Code:** 12147



**Foil Oval Platters**

**Size:** 14cm/17cm Pack 100  
**Code:** DA018/DA002



**Strawberry/Mince Pie Foil**

**Size:** 6.5cm x 3.5cm x 2.3cm  
**Case:** 500  
**Code:** STRAW

## Catering Disposables - Paper Bags



### White Paper Sulphite Bags

Size	Code:	
5 x 5"	SB55	Case 1000
6 x 6"	SB66	Case 1000
7 x 7"	SB77	Case 1000
7 x 9"	SB78	Case 1000
8 x 8"	SB88	Case 1000
10 x 10"	SB1010	Case 1000
10 x 12"	SB1012	Case 1000
12 x 12"	SB1212	Case 500



### Kraft Paper Bags

Size:	Code:	
8 x 8"	KB88	Case 1000
10 x 10"	KB1010	Case 1000
10 X 12"	KB1012	Case 500
12 X 12"	KB1212	Case 500



### Film Front Bags

Size:	Code:	
5 x 7"	FFB57	Case 1000
6 x 6"	FFB66	Case 1000
7 x 8"	FFB79	Case 1000
8 x 8"	FFB88	Case 1000
10 x 10"	FFB1010	Case 1000



### Snappy Seal Bags

Size:	Code:	
150x200mm	303275	Case 1000
150x250mm	303276	Case 1000
150x350mm	303274	Case 1000
200x200mm		Case 1000
200x250mm		Case 1000



### Snappy Heat Seal Bag Sealer

Size: Each Code: EA320  
For use with Snappy Seal Bags



### Snappy Sealer Spares Kit

Size: Each Code: EA322  
Spares Kit to fit Snappy Heat Seal Machine

## Clingfilm, Tinfoil, Greaseproof



### Wrapmaster ClingFilm

Size:	Code:	
12" x 100mt	DM387	Case 3 Rolls
12" x 300mt	31C80	Case 3 Rolls
18" x 300mt	31C81	Case 3 Rolls



### Wrapmaster Foil

Size:	Code:	
12" x 90mt	24C54	Case 3 Rolls
18" x 90mt	24C55	Case 3 Rolls



### Wrapmaster Freestanding Dispenser

Size:	Code:	
12"	DM389	Each
18"	DM392	Each



### Small Wrapmaster 1000 Dispenser

Size:	Code:	
12"	DM385	Each



### Greaseproof Paper Cutterbox

Size:	Code:	
15"x	GREASE	Each



### Baking Parchment Cutterbox

Size:	Code:	
12" x 75mt	21C26	Each
18" x 75mt	21C24	Each



### Foil Lined Parchment Paper Cutterbox

Size:	Code:	
18" x 30mt	21B88	Each



### Tinfoil Cutterbox

Size:	Code:	
12" x 75mt	TINFOIL12	Each
18" x 75mt	TINFOIL18	Each



### Clingfilm Cutterbox

Size:	Code:	
12" x 300mt	CLING12	Each
18" x 300mt	CLING18	Each

## Polythene Bags



### High Density Food Bags

Size:	Code:	
6x8"	HD687	Pack 1000
8x10"	HD8107	Pack 1000
10x12"	HD10127	Pack 1000
12x15"	HD12157	Pack 1000
12x18"	HD12187	Pack 1000



### High Tensile Food Bags

Size:	Code:	
9x13	HT913	Pack 1000
15x20	HT1520	Pack 1000
12x18	HT1218	Pack 1000
18x24	TRIDENT3	Pack 1000
24x36	TRIDENT5	Pack 500



### Clear Poly Bags 120g

Size:	Code:	
6x8	BOGNOR	Box 1000
7x9	BARNES	Box 1000
8x10	BASILDON	Box 1000
8x12	BARKING	Box 1000
10x12	BRISTOL	Box 1000
10x12	BRENTWOOD	Box 1000
12x15	BLACKBURN	Box 1000
12x18	BEDFORD	Box 1000
15x20	BEXHILL	Box 1000
18x24	BOURNEMOUTH	Box 500
20x30	BAGSHOT	Box 500
24x36	BURNLEY	Box 500



### 70mu Vacuum Pack Bags

Size:	Code:	
150x200	VAC1520	Case 1000
150x250	VAC1525	Case 1000
200x200	VAC2020	Case 1000
200x300	VAC2030	Case 1000
250x250	VAC2525	Case 1000
250x300	VAC2530	Case 1000
300x400	VAC3040	Case 1000
350x450	VAC350	Case 1000
400x500	VAC4050	Case 500

Other sizes available to order



### Extra Heavy Clear Poly Bags 500g

Size	Code:	
10x12	REDRUTH	Case 250
10x15	RUNCORN	Case 250
12x15	ROCK	Case 250
12x18	ROMFORD	Case 250
18x24	RAMSEY	Case 200
24x36	RAMSGATE	Case 100



### Heavy Clear Poly Bags 250g

Size:	Code:	
8x12	812250	Box 1000
10x12	OCKEN	Box 500
12x18	1218250	Box 500
18x24	OXFORD	Box 250
24x36	ORSETT	Box 250

## Catering Disposables - Bags, Platters, Drink Carrier, etc



**4 Hole Cup Carrier**

**Size:** 360 Case **Code:** CP942  
Kraft pulp carrier, Ideal for carrying hot drinks



**2 Hole Cup Carrier**

**Size:** 180 Case **Code:** CP940  
Kraft pulp carrier, Ideal for carrying hot drinks



**Recycled Kraft Carrier Bags SOS**

**Size:** 7x11.5x13" **Code:** 302167 Case 250  
10.25x15.5x16" 302175 Case 125  
12x19x17" TSBK1219 Case 500



**Recycled Kraft Carrier Bags**

**Size:** 7x10x8.5" **Code:** EU11722 Case 250  
8x13x10 EPCB290 Case 250  
10x15x12" EPCB390 Case 250



**White Kraft Carrier Bags**

**Size:** 7x10x8.5" **Code:** EU11719 Case 250  
8x13x10" EPCB290W Case 250  
10x15x12" EPCB390W Case 250



**White Kraft Carrier Bags SOS**

**Size:** 10x15x16 **Code:** TSBW101516 Case 500  
12x19x17 TSBW121917 Case 500



**Medium & Large Kraft Platter/Insert**

**Size:** 350x240x82mm **Code:** 01/PLASTD Case 25  
450x311x82mm 01/PLATTE Case 25



**Black Plastic Platters c/w Clear Lids**

**Size:** 175 x 130mm **Code:** QUARTER Case 100  
345 x 235mm SMLCOMBI Case 25  
390 x 290mm MEDCOMBI Case 25



**Reusable Sandwich Bags**

**Size:** Pack 5 **Code:** REB131  
Reusable about 50 times, the bag is easy to clean and lets you throw practically anything you need between two pieces of toast and heat away



## Catering Products Thermal Boxes, Thermosteel Pots, Gastronorms



**Basic GN1/1 Thermabox**

**Size:**  
600 x 400 x 230  
600 x 400 x 230  
600 x 400 x 270  
600 x 400 x 340

**Code:**

110/GN4  
170/GN6  
210/GN8  
280/GN10



**Light GN1/1 Thermabox - Sturdy box with incorporated handles**

**Size:**  
680x445x200  
680x445x300

**Code:**  
GN4 PLUS  
GN8PLUS



**Basic Top Gel - Complete system for cold chain maintaining**

**Size:**  
610 x 430 x 200  
610 x 430 x 250  
610 x 430 x 295

**Code:**  
120/TG1  
170/TG2  
215/TG3



**KANGABOX Tower 60 x 40**  
transporting 60x40cm baking sheets or trays. As a practical front loader with tightly closing sliding door,

All colours available to order



**KANGABOX Expert GN**  
Ultra- lightweight, perfectly-closing lid and high resistant surface: when transporting Gastronorm containers, the KANGABOX Expert GN offers maximum convenience and safety.



**KANGABOX Easy**  
ideal for transporting pizzas and cakes - and anything else best stored in square boxes. With its ultra-resistant surface, high stacking edge and ergonomically-shaped handles



**Thermo Stainless Steel Soup Containers complete with Anti Spill Lid - From 5lt to 30lt**

All sizes available to order



**Professional GN Gastronorms**  
GN Series are made in 18/10 AISI 304 stainless steel, suitable for contact with foodstuffs compliance EU 89/109. All sizes available to order



**Thermoking - the monomeal-box with release latch lid**

**Size:** 470 x 370 x 185mm/External  
**Code:** THERMOKING

# CATERING PACKAGING

## Catering Sundries Labels, Check Pads, etc



**Colour Coded Day Labels**

**Size:**  
L931 Monday  
L932 Tuesday  
L933 Wednesday  
L934 Thursday

**Code:**  
L935 Friday  
L936 Saturday  
L930 Sunday



**Colour Coded Day Dots - 2000**

**Size:**  
MB150 Monday  
MB152 Tuesday  
MB154 Wednesday  
MB156 Thursday

**Code:**  
MB158 Friday  
MB160 Saturday  
MB162 Sunday



**Prepped Food Labels**

**Size:** 51 x 40mm Roll 1000  
**Code:** FFL



**White Plain Label**

**Size:** 50 x 100mm Roll 1000  
**Code:** FCL1000



**Duplicate Restaurant Pad**

**Size:** 3 x 5.5"/50 Sheets  
**Code:** DD5P  
**Case** 100



**Carbonless Duplicate Pads**

**Size:** 6.5 x 3.75"/50 Sheets  
**Code:** DD6N  
**Case** 100



**Stainless Steel Service Trolleys/Tier**

**Size:**  
850x450x900mm  
950x500x950mm

**Code:**  
TY9002  
TY9001



**Stainless Steel Service Trolley/2 Tier**

**Size:**  
850x450x900mm  
950x450x950mm

**Code:**  
TY9004  
TY9003



**Utility Trolley/3 Tier**

**Size:**  
959x854x473mm

**Code:**  
BU4091

## Napkins and Table Covers



**Fuchsia Pink Napkins**

**Size:** 33cm 2ply  
40cm 2ply  
**Code:** PINK132  
PINK162  
Case 2000  
Case 1800



**Chocolate Napkins**

**Size:** 33cm 2ply  
40cm 2ply  
**Code:** CHOCOLATE132  
CHOCOLATE162  
Case 2000  
Case 1800



**Yellow Napkins**

**Size:** 33cm 2ply  
40cm 2ply  
**Code:** YELLOW132  
YELLOW162  
Case 2000  
Case 1800



**Black Napkins**

**Size:** 25cm 2ply  
33cm 2ply  
30cm 2ply  
**Code:** COCKTAILB  
BLACK132  
BLACK162  
Case 3000  
Case 2000  
Case 1800



**Blue Napkins**

**Size:** 33cm 2ply  
40cm 3ply  
**Code:** BLUE132  
BLUE162  
Case 2000  
Case 1800



**Burgundy Napkins**

**Size:** 33cm 2ply  
40cm 2ply  
**Code:** BURG132  
BURG162  
Case 2000  
Case 1800



**Green Mountain Pine Napkins**

**Size:** 33cm 2ply  
40cm 2ply  
**Code:** GREEN132  
GREEN162  
Case 2000  
Case 1800



**Ivory Napkins**

**Size:** 33cm 2ply  
40cm 2ply  
40cm 3ply  
**Code:** CREAM132  
CREAM162  
CREAM163  
Case 2000  
Case 1800  
Case 1200



**Red Napkins**

**Size:** 33cm 2ply  
40cm 3ply  
**Code:** RED132  
RED162  
Case 2000  
Case 1800

## Napkins and Table Covers



### White Napkins

<b>Size:</b>	<b>Code:</b>	
30cm 1ply	SPD314	Case 5000
33cm 2ply	SPD552	Case 2000
40cm 2ply	SPD1377	Case 2000
40cm 3ply	SPD1378	Case 1000



### 1ply White Dispenser Napkins

**Size:** 21cm x 25cm  
**Code:** SPD249  
**Case** 6000



### 1ply White JustOne Napkins

**Size:**  
**Code:** JUSTONE  
**Case** 8000



### White Banqueting Roll

**Size:** 1.2 x 100mt  
**Code:** BR1



### White Disposable Table Covers

<b>Size:</b>	<b>Code:</b>
90 x 90xm	TCWHITE
120 x 120cm	J77210



### Ducksback Wipeable Table Covers

**Size:** 90 x 90cm **Code:** D574012  
90 x 90cm  
120 x 120cm  
All Colours available



### Round Paper Doyleys

<b>Size:</b>	<b>Code:</b>	
4"	DOYLEY4	Case 2000
5"	DOYLEY5	Case 2000
6"	DOYLEY6	Case 2000
9"	DOYLEY9	Case 2000



### Lace Tray Papers

<b>Size</b>	<b>Code:</b>	
12 x 16"	TRAYP	Pack 250



### Paper Place Mats

<b>Size:</b>	<b>Code:</b>	
10 x 13"	PLACEMATL	Pack 1000

ORDER BY TELEPHONE: 01294 275133



CAKE BOXES



BUTCHERS  
SHEETS

# BUTCHERS & BAKERS PACKAGING



FOIL  
CONTAINERS



CARRIER  
BAGS

## Cake Boxes, Bakery Wrap



**White Self Erect Hinge Cake Boxes**

**Size:** 5 x 5 x 3"    **Code:** CB553    Case 250  
6 x 6 x 3"    CB663    Case 250  
7 x 7 x 3"    CB773    Case 250  
PHONE FOR OTHER AVAILABLE SIZES



**White Self Erect Quick Pack Tray**

**Size:** 9 x 6 x 2"    **Code:** QPT962    Case 500  
10.25 x 8 x 2"    QPT1082    Case 500



**White Self Erect Window Cake Box**

**Size:** 7 x 7 x 3"    **Code:** CBW773    Case 200  
PHONE FOR OTHER AVAILABLE SIZES



**White Cake Box and Lid**

**Size:** 10x10x4"    **Code:** CAKEB10    Case 100  
12x12x4"    CAKEB12    Case 100  
14x14x4"    CAKEB14    Case 100  
PHONE FOR OTHER AVAILABE SIZES



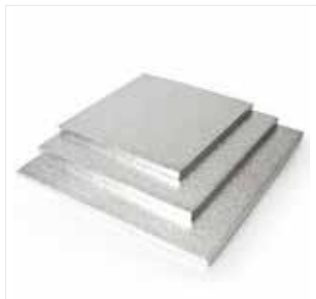
**Round Silver Lined Cake Card**

**Size:** 4"    **Code:** ROUND CARD4    Pack 25  
8"    ROUND CARD8    Pack 25  
10"    ROUND CARD10    Pack 25  
12"    ROUND CARD12    Pack 25



**Round Silver Lined Cake Drum**

**Size:** 9"    **Code:** ROUNDDRUM9    Pack 5  
12"    ROUNDDRUM12    Pack 5  
14"    ROUNDDRUM14    Pack 5  
OTHER SIZES AVAILABLE



**Square Silver Lined Cake Drum**

**Size:** 10"    **Code:** SQUAREDRUM10    Pack 5  
12"    SQUAREDRUM12    Pack 5  
14"    SQUAREDRUM14    Pack 5



**Square Silver Lined Cake Card**

**Size:** 7"    **Code:** SQUARECARD7    Pack 25  
9"    SQUARECARD9    Pack 25  
10"    SQUARECARD10    Pack 25  
12"    SQUARECARD12    Pack 25



**Centre Folded Bakery Wrap**

**Size:** 600/300mm    **Code:** BW600  
Centre folded 20 micron clear polypropylene film on a roll, for use with L sealers - PHONE FOR OTHER SIZES



## Cake Boxes, Bakery Wrap



**White Greaseproof Muffin Cases**

<b>Size:</b>	<b>Code:</b>	
41 x 25mm	EH140	Pack 1000
57 x 38mm	EW510	Pack 250
50 x 43mm	YH030	Pack 1000



**White Petit Four Cases**

<b>Size:</b>	<b>Code:</b>	
1 x 0.75"	02.0.56	Pack 1000



**Tulip Muffin Case**

**Size:** 160X150X50mm  
**Code:** MW001



**Greaseproof Loaf Liner**

<b>Size:</b>	<b>Code:</b>	
5 x 3 x 2"	MADERIA	Case 1000



**Easibake Plum Mould**

**Size:** 80x40x40mm **Code:** PM1000  
Case 1000  
Ovenable board mould ideal for an individual sized loaf.



**Hinged Gateaux Slice**

**Size:** 105x145x63mm  
**Code:** CAKESLICEF **Case 250**  
**Space for Fork**



**Hinged Lid Gateaux Container**

**Size** **Code:**  
8x8x3.5" GATEAUXPACK Case 125  
6x6x4" DA470 Case 250



**Single Cupcake Holder**

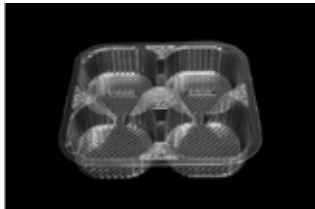
**Size:** 80x55cm **Code:**  
Ideal for cupcakes or muffins, keeps fresher longer



**Square Hinged Lid Container**

**Size:** 210x210x76mm **Code:** C90PST1  
Case 500  
Holds 4 pineapple cakes or also ideal for salads

## Cake Trays



### 4 Round Cavity Tray

**Size:** 175mm x 175mm x 31mm

**Code:** DMD10K

Case 2280

SMALLER QUANTITIES MAY BE AVAILABLE



### 4 Cavity Round Tart Tray

**Size:** 146mm x 146mm x 35mm

**Code:** DMD2

Case 3450

SMALL QUANTITIES MAY BE AVAILABLE



### Rectangle Hinged Lid Box

**Size:** 225mm x 166mm x 60mm

**Code:** DMD203

Case 200



### Double Plain Rectangle Tray

**Size:** 194mm x 110mm x 50mm

**Code:** DMD29D

Case 2140

SMALLER QUANTITIES MAY BE AVAILABLE



### Double Cavity Square Deep Tray

**Size:** 160mm x 78mm x 35mm

**Code:** DMD31D

Case 3920

SMALLER QUANTITIES MAY BE AVAILABLE



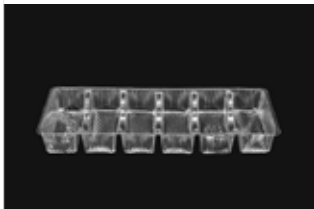
### Plain Rectangle Tray

**Size:** 167mm x 92mm x 35mm

**Code:** DMD35

Case 3600

SMALLER QUANTITIES MAY BE AVAILBLE



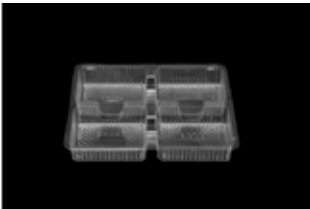
### 6 Cavity Finger Tray

**Size:** 240mm x 86mm x 30mm

**Code:** DMD60

Case 2700

SMALLER QUANTITIES MAY BE AVAILABLE



### 4 Cavity Square Tray

**Size:** 153mm x 139mm x 20mm

**Code:** DMD64

Case 1800

SMALLER QUANTITIES MAY BE AVAILABLE



### 4 Cavity Hinged Lid Tart Tray

**Size:** 170mm x 160mm x 54mm

**Code:** DMD202

Case 290

## Sheeted Paper



**9 x 14"/14 x 18 Plastissue Sheets**

**Size:** 2000 Sheets **Code:** PLAS914/1418  
These are thin HD Sheets (high density), which are ideal for wrapping meat prior to it being bagged for the customer



**18 x 30" Silicone baking paper**

**Size:** Box 2 Reams **Code:** SP1830B  
Siliconed double faced baking sheets



**60gsm Peach Meat Saver Paper**

**Size:** 10 x 12" **Code:** MEATSP  
Used to line counter display trays and to place between layers of fresh meat to retain freshness of the surface of the meat and extend shelf life.



**Duplex Sheets - All Colours**

**Size:** 10 x 15" **Code:**  
Red DUPLEXR Case  
Blue DUPLEXB Case  
Green DUPLEXG Case  
Yellow DUPLEXY Case



**Clear Film Wrap**

**Size:** **Code:**  
5 x 7" CFW57 4 Parcels  
9 x 13" CFW913 Parcel  
15 x 10" CFW1510 Parcel



**Pure Kraft Paper**

**Size:** **Code:**  
15 X 10" PK1510 4 Parcels  
15 X 13" PK1513 6 Parcels  
15X 20" PK1520 2 Parcels  
20 X 30" PK2030 1 Parcel



**Burger Wrap**

**Size:** 250 x 320mm **Code:**  
Red BW/R 1000 Sheets  
Blue BW/B 1000 Sheets  
Green BW/Y 1000 Sheets  
Yellow BW/G 1000 Sheets



**News Off Cuts 10kg Parcel**

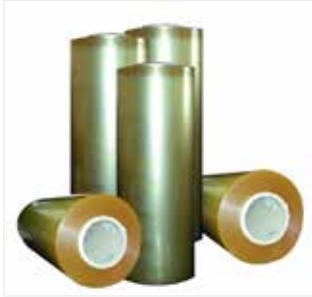
**Size:** **Code:**  
15 x 20" NOC1520 Ream  
18 x 24" NOC1824 Ream  
20 x 30" NOC2030 Ream



**Pure Greaseproof 34gsm**

**Size:** **Code:**  
15 x 40" IGP1540 Ream  
20 x 30" IGP2030 Ream  
GREASEPROOF CAN BE CUT TO SIZE

## Butchers Packaging



**14mu Meat Wrap**

Size:	Code:	
12"	MW12	1500m
14"	MW14	1500m
18"	MW18	1500m



**Black EPS Meat Trays**

Size:	Code:
5.25x5.25x0.5	MFB1
7x5.25x0.65	MFB2
8.75x5.25x0.65	MFB3

OTHER SIZES AVAILABLE TO ORDER



**White EPS Meat Trays**

Size:	Code:
5.25x5.25x0.5	MFM1
7x5.25x0.65	MFM2
8.75x5.25x0.65	MFM3

OTHER SIZES AVAILABLE TO ORDER



**CPET Food Trays**  
Size: 171x127x40mm  
Code: CPET21711  
Case: 840



**Lidding Film**

Size: 130mmx500mtr Code: CPETWELD



**Tamper Evident Pots c/w Lids**

Size:	Code:	
280ml	TAMPER280	
365ml	TAMPER365	Case 500
520ml	TAMPER520	Case 500
800ml	TAMPER800	Case 240



**Burger Discs**

Size:	Code:	
4"	HD4	Case 5000
5"	HD5	Case 5000



**Rayon Twine**

Size	Code:	
No 5	RAYON5	6 x 500g Case

OTHER SIZES AVAILABLE TO ORDER

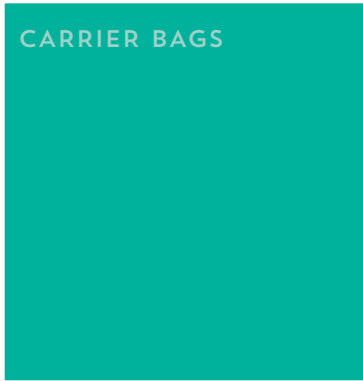


**Cookin Bags**

Size: **VARIOUS** Code: **COOKIN\*\***  
These cooking bags are generally used for the cooking of hams, beef, and legs of pork etc.



CARRIER BAGS



# RETAIL PACKAGING

PLASTIC BAGS



PAPER BAGS



TISSUE PAPER



## Carrier Bags - Paper & Plastic



**Purple Kraft Carrier Bag**

**Size:**  
9.6x4.4x12.8"  
12.8x4.8x16.6"  
Other sizes available to order



**Heart Design Kraft Carrier Bag**

**Size:**  
7.2x3.2x9.6"  
9.6x4.4x12.8"  
Other sizes available to order



**Seventies Design Kraft Carrier Bag**

**Size:**  
9.6x4.4x12.8"  
12.8x4.8x16.6"  
Other sizes may be available to order



**Kraft Carrier Bag**

**Size:**  
7.2x3.2x9.6"  
9.6x4.4x12.8"  
12.8x4.8x16.6"  
Other sizes available to order



**Kraft Satchel Gift Bags**

<b>Size:</b>	<b>Code:</b>	
7 x 9"	SB79/B/G/B/R	Pack 100
8 x 16"	SB816/B/G/B/R	Pack 100



**Orange Satchel Gift Bag**

<b>Size:</b>	<b>Code:</b>	
7 x 9"	SBO79	Pack 100
8 x 16"	SBO816	Pack 100



**Lime Green Satchel Gift Bag**

<b>Size:</b>	<b>Code:</b>	
7 x 9"	SBG79	Pack 100
8 x 16"	SBG816	Pack 100



**Aquamarine Satchel Gift Bag**

<b>Size:</b>	<b>Code:</b>	
7 x 9"	SBAM79	Pack 100
8 x 16"	SBAM816	Pack 100



**Pink/Blue Stripe Paper Bag**

<b>Size:</b>	<b>Code:</b>	
5 x 7"	STRIPE57	Pack 1000
7 x 9"	STRIPE79	Pack 1000
8 x 11"	STRIPE811	Pack 1000
10 x 14"	STRIPE1014	Pack 1000



## Carrier Bags - Paper & Plastic



**Blue Recycled Vest Carrier Bag**

**Size:** 11x17x21" 23mu  
**Code:** GALAXY1 Case 1000  
12x18x23" 23mu CBBELUSHI Case 1000



**Candy Stripe Vest Carrier Bag**

**Size:** 10x15x18" 9mu MEDIUM Case 2000  
11x17x21" 15mu NEPTUNE Case 2000



**White Vest Carrier Bag**

**Size:** 11x17x21" 14mu GRANITE Case 2000  
11x17x21" 24mu EMERALD Case 1000



**Fish 'n' Chip Design Carrier Bag**

**Size:** 11x16x19" 11mu  
**Code:** FISHCHIP Case 2000



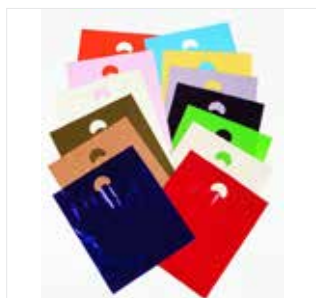
**Butcher Design Vest Carrier Bag**

**Size:** 11x17x21" 12mu  
**Code:** BUTCHER Case 2000



**Small White Vest Carrier Bag**

**Size:** 7x12x17" 19mu VT2 Case 2000  
10x15x18" 13mu CHURCHILL Case 2000  
13x19x23" 23mu CHEETAH Case 1000



**Punch Handle LD Carrier Bag**

**Size:** 15 x 18 x 3" /500  
**Code:** TEXAS  
White stock item, other colours available to order



**Large Punch Handle Carrier Bag**

**Size:** 22 x 18 x 3" /500  
**Code:** FASHION  
White stock item, other colours available to order



**Small Black/Gold Stripe Carrier Bag**

**Size:** 10 x 15" /500  
**Code:** HILTON  
Small polythene carrier bag, ideal for cards, candles, jewellery, etc.

## Carrier Bags - Paper & Plastic



**Blue Kraft Carrier Bag**

**Size:**  
7.2x3.2x9.6"  
9.6x4.4x12.8"  
12.8x4.8x16.6"  
Other sizes available to order



**Black Kraft Carrier Bag**

**Size:**  
7.2x3.2x9.6"  
9.6x4.4x12.8"  
12.8x4.8x16.6"  
Other sizes available to order



**Navy Kraft Carrier Bag**

**Size:**  
7.2x3.2x9.6"  
9.6x4.4x12.8"  
12.8x4.8x16.6"  
Other sizes available to order



**Lime Green Kraft Carrier Bag**

**Size:**  
7.2x3.2x9.6"  
9.6x4.4x12.8"  
12.8x4.8x16.6"  
Other sizes available to order



**Fuchsia Pink Kraft Carrier Bag**

**Size:**  
7.2x3.2x9.6"  
9.6x4.4x12.8"  
12.8x4.8x16.6"  
Other sizes available to order



**Red Kraft Carrier Bag**

**Size:**  
7.2x3.2x9.6"  
9.6x4.4x12.8"  
12.8x4.8x16.6"  
Other sizes available to order



**Silver Kraft Carrier Bag**

**Size:**  
7.2x3.2x9.6"  
9.6x4.4x12.8"  
12.8x4.8x16.6"  
Other sizes available to order



**Cream Kraft Carrier Bag**

**Size:**  
7.2x3.2x9.6"  
9.6x4.4x12.8"  
12.8x4.8x16.6"  
Other sizes available to order



**White Kraft Carrier Bag**

**Size:**  
7.2x3.2x9.6"  
9.6x4.4x12.8"  
12.8x4.8x16.6"  
Other sizes available to order

## Retail Packaging - Tissue Paper



**Peach Tissue Paper**

Size: 20 x 30" Approx 480 sheets

Code: PEACHTP



**Lime Green Tissue Paper**

Size: 20 x 30" Approx 480 sheets

Code: GREENTP



**Ivory Cream Tissue Paper**

Size: 20 x 30" Approx 480 sheets

Code: CREAMTP



**Burgundy Tissue Paper**

Size: 20 x 30" Approx 480 sheets

Code: BURGUNDYTP



**Fuchsia Tissue Paper**

Size: 20 x 30" Approx 480 sheets

Code: FUCHSIATP



**Violet Tissue Paper**

Size: 20 x 30" Approx 480 sheets

Code: VIOLETP



**Black Tissue Paper**

Size: 20 x 30" Approx 480 sheets

Code: BLACKTP



**Aquamarine Tissue Paper**

Size: 20 x 30" Approx 480 sheets

Code: AQUATP



**Red Tissue Paper**

Size: 20 x 30" Approx 480 sheets

Code: REDTP



**White Tissue Paper**

Size: 20 x 30" Approx 480 sheets

Code: WHITETP



**Chocolate Tissue Paper**

Size: 20 x 30" Approx 480 sheets

Code: CHOCOLATETP



**Orange Tissue Paper**

Size: 20 x 30" Approx 480 sheets

Code: ORANGETP

# CUSTOM PRINT YOUR PACKAGING



---

CUSTOM PRINTING IS AVAILABLE  
TO ORDER AND IS A GREAT WAY TO  
PROMOTE YOUR BUSINESS. GET YOUR  
OWN DESIGN/LOGO PRINTED ON YOUR  
CARRIER BAGS, COUNTER BAGS, PAPER  
BAGS, NAPKINS, CUPS ETC.

*PLEASE PHONE 01294 275133  
FOR FURTHER DETAILS.*

---



LIGHT DUTY  
HAND CLEANSERS

# HAND HYGIENE

HEAVY DUTY  
HAND CLEANSERS



DISPENSERS



SANITISERS



# HAND HYGIENE

## Deb Hand Hygiene Range Cleanse - Light Duty Hand Cleansers



**Deb Cleanse Light Dispenser**

**Size:** 2lt  
**Code:** LGT2LDPEN  
4lt LGT4LDREN



**Deb Cleanse Shower Dispenser**

**Size:** 1lt  
**Code:** SHW1LDSEN  
2lt SHW2LDPEN



**Deb Cleanse Washroom Dispenser**

**Size:** 1lt  
**Code:** WRM1LDSEN  
2lt WRM2LDPEN



**Deb Pure Wash**

**Size:** 2lt  
**Code:** PUW2LT  
4lt PUW4LTR  
Perfume and dye free soap for regular use  
to remove general dirt and grime



**Deb Lotion Wash**

**Size:** 2lt  
**Code:** LTW2LT  
4lt LTW4LTR  
Lightly perfumed lotion hand cleanser for  
regular use to remove dirt and grime



**Deb Hair & Body Wash**

**Size:** 1lt  
**Code:** HAB1L  
2lt HAB2LT  
All over hair & body lotion wash with  
invigorating rainforest fresh fragrance



**Deb Clear Foam Wash - Washroom**

**Size:** 1lt  
**Code:** CLR1L  
2lt CLR2LT  
Case 6  
Case 4  
Perfume and dye free mild foam soap for  
general washroom use



**Deb Azure Foam Wash - Washroom**

**Size:** 1lt  
**Code:** AZU1L  
2lt AZU2LT  
Case 6  
Case 4  
Pleasantly fragranced mild foam soap for  
general washroom use



**Deb Rose Foam Wash - Washroom**

**Size:** 1lt  
**Code:** RFW1L  
2lt RFW2LT  
Case 6  
Case 4  
Luxurious pleasantly fragranced rich mild  
foam soap with added moisturisers

ORDER BY TELEPHONE: 01294 275133



# HAND HYGIENE

## Deb Hand Hygiene Range Heavy Duty Hand Cleansers



**Deb Cleanse Heavy Dispenser**

**Size:** 2lt  
**Code:** HVY2LDPEN  
4lt HVY4LDREN



**Deb Cleanse Ultra Dispenser**

**Size:** 2lt  
**Code:** ULT2LDPEN  
4lt ULT4LDREN



**Deb Lime Wash**

**Size:** 2lt  
**Code:** LIM2LT Case 4  
4lt LIM4LTR Case 4  
Effective heavy duty hand cleanser with natural corneal & lime extracts



**Deb Sunflower Wash**

**Size:** 2lt  
**Code:** SFW2LT Case 4  
4lt SFW4LT Case 4  
Solvent free heavy duty hand cleanser with natural sunflower oil & corneal scrub



**Deb Citrus Power Wash**

**Size:** 2lt  
**Code:** CIT2LT Case 4  
4lt CIT4LT Case 4  
Natural orange oil extracts, corneal hand scrub for effective cleaning



**Deb Ultra Wash**

**Size:** 2lt  
**Code:** ULT2LT Case 4  
4lt ULT4LT Case 4  
Powerful hand cleaner to remove paint, inks resins, contains moisturisers



**Deb Natural Powerwash**

**Size:** 2lt  
**Code:** NPW2LT Case 4  
4lt NPW4LT Case 4  
A deep clean natural sunflower and cornflower, ideal for industrial use



**Deb Restore 1000 Dispenser**

**Size:** 1lt  
**Code:** RES1LDSEN



**Deb Pure Restore**

**Size:** 1lt  
**Code:** RES1L Case 6  
Perfume & dye free, highly effective mild after work conditioning cream, care for dry, sore or chapped hands





## Deb Hand Hygiene Range Sanitisers



**Deb Sanitise 1000 Dispenser**

**Size:** 1lt  
**Code:** SAN1LDSN



**Deb Instant Foam Sanitiser**

**Size:** 1lt  
**Code:** DIS1000ML Case 6  
Perfume & dye free alcohol based foam hand sanitiser with moisturiser conforms to EN1500 in 15 seconds passes EN1276



**Deb Instant Foam Sanitiser**

**Size:** 250ml  
**Code:** DIS250ML Case 12  
Handy size instant foam sanitiser, conforms to EN1500 in 15 seconds, passes EN12054, EN1276, EN1275 & EN1040



**Deb Protect 1000 Dispensers**

**Size:** 1lt  
**Code:** PRO1LDSN  
1lt Sun SUN1LDSN



**Deb Sun Protect**

**Size:** 1lt  
**Code:** SUN1L Case 6  
SPF30 Sunscreen to protect the skin against the sun's harmful rays, perfume free and non greasy, water resistant



**Deb Universal Protect**

**Size:** 1lt  
**Code:** UPW1L Case 6  
Universal pre work skin cream to protect against contact with water and non water base contaminants, perfume free



**Skin Hygiene Centre**

**Size:** 570 x 455mm  
**Code:** SHYCTR1EN  
Contains 1 x Cleanse Antibac 1000, 1 x Sanitise 1000 and 1 x Restore 1000 dispensers, complete with backboard



**Skin Safety Centre**

**Size:** 590 x 510mm  
**Code:** SSCSML1EN  
Contains 1 x Protect 1000, 1 x Cleanse Heavy 2000 and 1 x Restore 1000 dispensers, complete with backboard



**Skin Safety Centre**

**Size:** 800 x 570mm  
**Code:** SSCLGE1EN  
Contains 1 x Protect 1000, 1 x Cleanse Light 2000, 1 x Cleanse Heavy 2000 & 1 x Restore 1000 dispensers, complete with backboard

FOR DISHWASHING



# DOSING UNITS



FOR LAUNDRY



## DOSING UNITS

---

### Dosing Units for hire



#### Laundry Systems

Developed specifically for the professional laundry manager.

For hire information please call 01294 275133.



#### Dishwash Systems

To maximise economy and efficiency in your auto dishwashing operation.

For hire information please call 01294 275133.

## DOSING UNITS

### Laundry & Dishwash Detergents for Dosing Units

#### Laundry



**Jeyes Concentrated Laundry Detergent**  
**Designed for Industrial Laundry**  
 Main wash enzymatic detergent for all fabrics. Specially formulated to remove grease and soil deposits. Effective removal of protein containing stains. Pleasant, long lasting perfume.

<b>Size:</b>	<b>Code:</b>
10lt	575525



**Jeyes Concentrated Fabric Softener**  
**Designed for Industrial Laundry**  
 Leaves fabrics fragrant and soft. Helps reduce static build-up.

<b>Size:</b>	<b>Code:</b>
10lt	571910



**Jeyes Concentrated Oxygen Destainer**  
**Designed for Industrial Laundry**  
 Hydrogen Peroxide formulation for use with Laundry Detergent. Excellent stain removal, colour-fast. Suitable for use on flame retardant fabrics.

<b>Size:</b>	<b>Code:</b>
10lt	575512

#### Dishwash



**A1 Auto Dishwash Detergent**  
**Designed for Dosing Units**  
 Helps prevent scale build-up. Contains efficient soil anti-redeposition agents. Not suitable for use on aluminium.

<b>Size:</b>	<b>Code:</b>
5lt	572260
10lt	572270



**A8 Auto Dishwash Rinse Aid**  
**Designed for Dosing Units**  
 Rinse agent to aid rapid drying of cutlery and crockery in professional, automatic dishwashing machines. Leaves cutlery and crockery sparkling and streak-free.

<b>Size:</b>	<b>Code:</b>
5lt	571290
10lt	571300



**A4 Auto Pan Wash Detergent**  
**Designed for Dosing Units**  
 For use in automatic pan and utensil washing machines. Prevents formation of hard water scale. Safe for use on aluminium.

<b>Size:</b>	<b>Code:</b>
10lt	571270

# INDEX

Air Freshener	17	Concentrate Chemicals	16	Floor Scraper	33
Alcohol Hand Gel	15	Cookin Bags	75	Foam Plates	52
Aprons (Disposable)	48	Corrugated Paper Rolls	43	Foil Containers/Trays	61
Atlas Cloths	25	Couch Rolls	37	Food Bags	64
Bag Sealing Tape	44	Coveralls (Disposable)	47	Food Labels	67
Baguette Containers	58-59	CPET Food Trays	75	Food Pots & Pails	56
Bakery Wrap	71	Crockery	7	Food Trays & Boxes	57
Baking Parchment	63	Cups Hot/Cold	54	Fragile Tape	44
Banqueting Roll	69	Cup Carriers	65	Furniture Polish	17
Bar Caddy	8	Cupcake Holders	72	Garment Covers	43
Bar Supplies	5	Day Dots	67	Gastronorms	66
Beerline Cleaner	6	Deb Hand Cleaners	82-84	Gateaux Slice/Container	72
Bin Liners	45	Degreaser	11/13	Gift Bags, Paper & Plastic	77-79
Biodegradeable Food Containers	60	Deli Pots	56	Glass Cloths	29
Bleach	14	Deodorisers	17	Glass & Window Cleaner	14
Body Fluid Spill Kits	24	Descaler	11	Glass Renovator	6
Brushes	33-34	Detergent Wipes	24	Glassware	6
Bubble Wrap	43	Disc Stirrers	8	Glasswash Brush	8
Bun Cases	72	Dishcloths	29	Glasswash Hand/Machine	6/12
Burger Discs	75	Dishwashing Chemicals	12	Graffiti Wipes	24
Burger Wrap	74	Dispensers Paper & Soap	15/38	Greaseproof Paper	63/74
Burn Spray	47	Disposable Aprons	48	Hand Shovel	33
Cake Boxes	71	Disposable Glassware	5	Handcare/Soap	15/82-84
Cake Cards	71	Doodlebug Pads/Tools	33	Hand Sanitiser	15/84
Cake Drums	71	Dosing Units & Chemicals		Hand Towels	37
Cake Trays	73	for Kitchen & Laundry	86-87	Hard Surface Cleaners	11
Car Valeting Chemicals	20/21	Doyleys	69	Heat Seal Bags/Machines	62
Carpet Cleaner Fluid	14	Drain Cleaner	13	High Tensile Food Bags	64
Carrier Bags, Paper,		Duplex Sheets	74	Housekeeping	14
Plastic & Printed Design	65/77-79	Dusters	29/30	Hygiene Brushes	34
Centrepull	37	Dustbeaters	30	Ice Cream Spoons	51
Chip Cone	52	Dustpan Set	33	Industrial Aerosols	19
Chlorine Tablets	13	Easibake Plum Mould	72	Industrial Chemicals	22
Clear Waste Sacks	45	Eyewash	47	Industrial Packaging	43/44
Clinical Waste Sacks	45	Fabric Conditioner	14	Industrial Rags	25
Cling Film	63	Feather Dusters	30	Industrial Hand Cleaner	82-84
Clear Film Wrap	74	Film Front Bags	62	Industrial Wipes (Hand & Surface)	24-25
Cloths	29/30	Fish & Chip Boxes	57	Jiffy Foam Roll	43
Coasters	8	First Aid Kits	47	Kitchen Hygiene	13
Cobweb Duster	30	Flash Spray with Bleach	13	Kraft Carrier Bags	65/77/79
Cocktail Napkins	8	Floor Care Chemicals	10/11	Kraft Food Containers	59
Cocktail Sticks	8	Floorcloths	29	Kraft Paper (Pure)	74
Compactor Sacks	45	Floor Dusters	30	Kraft Paper Rolls	43
Cone Cup	54	Floor Pads	35	Kraft SOS Carrier Bags	65

# INDEX

Labels (Food)	67	Platters/Lids	65	Stirrers	51
Latex Gloves	48	Polishing Cloths	25	Stockinette Rolls	25
Laundry Bags	14	Polygrip Bags	44	Straws	5
Laundry Destainer	14	Polyprop Strapping	44	Stretch Film	44
Layflat Tubing	43	Polystyrene Containers	52/56	Sun Protection (Skin)	84
Lidding Film	75	Polystyrene Cups	54	Surface Sanitising Wipes	24
Lint Free Atlas Cloths	25	Polystyrene Packing	44	Swing Bin Liners	45
Litter Picker	33	Polythene Aprons	48	Table Covers	69
Loaf Tin Liner	72	Polythene Bags (Clear) Food Grade	64	Takeaway Boxes	52/56-57
Masking Tape	43	Polythene Bags (HD) Food Grade	64	Tamper Evident Pots	75
Meat Saver Paper	74	Polythene Gloves	47	Tannin Remover	13
Meat Trays	74	Polythene Sheeting	43	Tape Dispenser	44
Meat Wrap	75	Portion Pots	56/58	Tea Towels	29
Microwave Containers	53	Pot Liners	50	Thermal Boxes	66
Mob Caps	47	Probe Wipes	24	Thermosteel Pots	66
Miraclean Sponge	30	Quash Lipstick Remover	8	Tinfoil	63
Mopping Equipment	27-28	Quick Pack Trays	71	Tissue Paper	80
Muffin Cases	72	Rags	25	Toasted Sandwich Bags	65
Multi Purpose Cleaner	11	Rayon Twine	75	Toilet Brush Set	33
Nail Brush	34	Rinse Aid	6/12	Toilet Rolls	37
Napkins	8/68-69	Roll Containers	58	Tork Paper Products	41
News Offcuts	74	Rubber Gloves	47	Tortilla Wraps	58
Nitrile Gloves	48	Rubble Sacks	45	Traffic Film Removers	21
Noodle Boxes	56	Safety Glasses/Goggles	47	Tray Papers	69
Odour Neutraliser	17	Salad Containers	58	Traywash	13
Oven Cleaner	13	Sandwich Bags	65	Trolleys Service/Utility	67
Overshoes	48	Sandwich Containers	58-59	Uniwipes	25
Oversleeves	48	Sanitiser	12/13	Vacuum Pack Bags	64
Packaging Tape	44	Sauce Pots	56/58	Vinyl Gloves	48
Pallet Wrap	43	Scourers	29-30	Vinyl Tape	43
Paper Bags (Food)	62	Self Seal Bags	44	Visitor Coats	47
Paper Cups Hot & Cold	54/55	Silicone Baking Paper	74	Waitress Pads	67
Paper Hygiene Systems	39/40	Skin Cleansing Foam	24	Washing Powder	14
Paper Plates	52	Skin Cleansing Wipes	24	Washroom Cleaners	11
Parchment Paper	63	Skin Safety Centre	84	Washing Up Liquid	12/13
Patient Skin Wipes	24	Smoothie Cups	55	Wheelie Bin Liners	45
Pedal Bin Liners	45	Soap	15/82-84	Window Cleaning	31
Petit Four Cases	72	Soap Dispensers	15/38	Wooden Chip Fork	51
Pizza Boxes	57	Spill Kits	23	Wooden Cutlery	51
Place Mats	69	Sporks	51	Wooden Skewers	8
Plasters	47	Squeegees	31-32/34	Wooden Stirrers	51
Plastic Cups	54	Stain Remover	14	Wrapmaster Dispensers,	
Plastic Cutlery	51	Stainless Steel Cleaner	13	Film & Foil Refills	63
Plastissue Sheets	74	Steel Strapping	44		

# NOTES





TEL: 01294 275133

EMAIL: [SALES@GMCCORSEHILL.CO.UK](mailto:SALES@GMCCORSEHILL.CO.UK)

AILSA ROAD, KYLE INDUSTRIAL ESTATE  
IRVINE, KA12 8NG

[WWW.GMCCORSEHILL.CO.UK](http://WWW.GMCCORSEHILL.CO.UK)